

Applicant : WONST
224, Yuram-gil, Paltan-myeon, Hwaseong-si, Gyeonggi-do 18529, Korea

The following sample(s) was/were submitted and identified on behalf of the applicant as: -

Sample Name : LF Seal

Sample ID/Description : -

Date of receipt : Jun 19, 2018

Test Period : Jun 19 ~ 25, 2018

Date of issue : Jun 25, 2018

Testing Environment

Temperature : (25.8 ± 0.9) °C

Relative Humidity : (52 ± 6) %

For further details, please refer to the following pages.

Tested by :

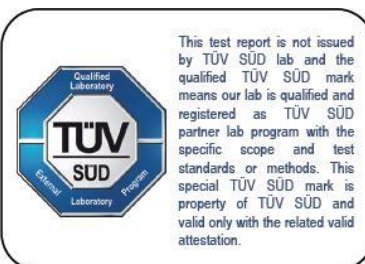


Na Rae Kim

Reviewed by :



Jeong Ryeol Baik



■ Result

Polybrominated biphenyls (PBBs)

Item(s)	Unit	Test Method	MDL	Result
Monobromobiphenyl	mg/kg	IEC 62321-6 : 2015, GC-MS.	5	N.D.
Dibromobiphenyl	mg/kg		5	N.D.
Tribromobiphenyl	mg/kg		5	N.D.
Tetrabromobiphenyl	mg/kg		5	N.D.
Pentabromobiphenyl	mg/kg		5	N.D.
Hexabromobiphenyl	mg/kg		5	N.D.
Heptabromobiphenyl	mg/kg		5	N.D.
Octabromobiphenyl	mg/kg		5	N.D.
Nonabromobiphenyl	mg/kg		5	N.D.
Decabromobiphenyl	mg/kg		5	N.D.

Polybrominated diphenyl ethers (PBDEs)

Item(s)	Unit	Test Method	MDL	Result
Monobromodiphenyl ether	mg/kg	IEC 62321-6 : 2015, GC-MS.	5	N.D.
Dibromodiphenyl ether	mg/kg		5	N.D.
Tribromodiphenyl ether	mg/kg		5	N.D.
Tetrabromodiphenyl ether	mg/kg		5	N.D.
Pentabromodiphenyl ether	mg/kg		5	N.D.
Hexabromodiphenyl ether	mg/kg		5	N.D.
Heptabromodiphenyl ether	mg/kg		5	N.D.
Octabromodiphenyl ether	mg/kg		5	N.D.
Nonabromodiphenyl ether	mg/kg		5	N.D.
Decabromodiphenyl ether	mg/kg		5	N.D.

■ Result

Heavy metal

Item(s)	Unit	Test Method	MDL	Result
Cadmium (Cd)	mg/kg	IEC 62321-5 : 2013, ICP-OES.	1	N.D.
Lead (Pb)	mg/kg		5	N.D.
Mercury (Hg)	mg/kg	IEC 62321-4 : 2013, ICP-OES.	5	N.D.
Hexavalent Chromium (Cr ⁶⁺)	mg/kg	IEC 62321-7-2 : 2017, UV-VIS.	1	N.D.

Phthalate

Item(s)	CAS No.	Unit	Test Method	MDL	Result
Diisobutyl phthalate (DIBP)	84-69-5	mg/kg	IEC 62321-8 : 2017, GC-MS.	50	N.D.
Di-n-butyl phthalate (DBP)	84-74-2	mg/kg		50	N.D.
Benzyl butyl phthalate (BBP)	85-68-7	mg/kg		50	N.D.
Di(2-ethyl hexyl) phthalate (DEHP)	117-81-7	mg/kg		50	N.D.

* Note :

MDL = Method detection limit

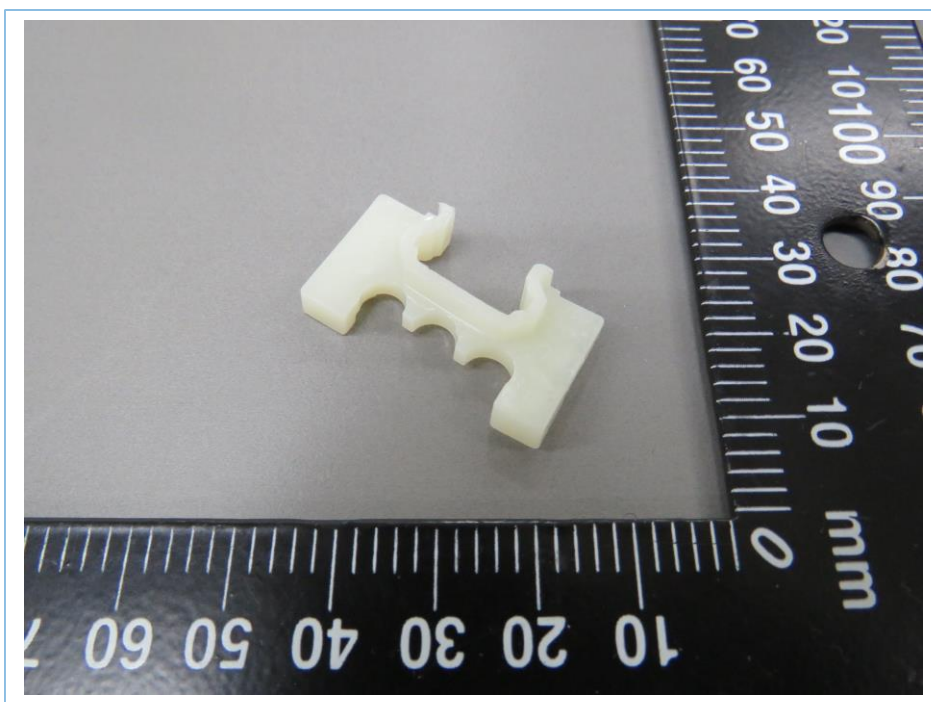
N.D. = Not detected

Negative = Undetectable / Positive = Detectable

mg/kg = ppm (part per million)

If the star mark (*) is shown on the item, it isn't the scope recognized by TÜV SÜD.

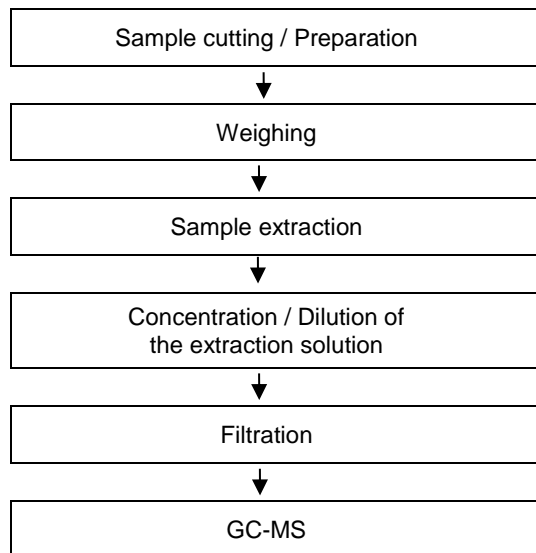
■ Photograph



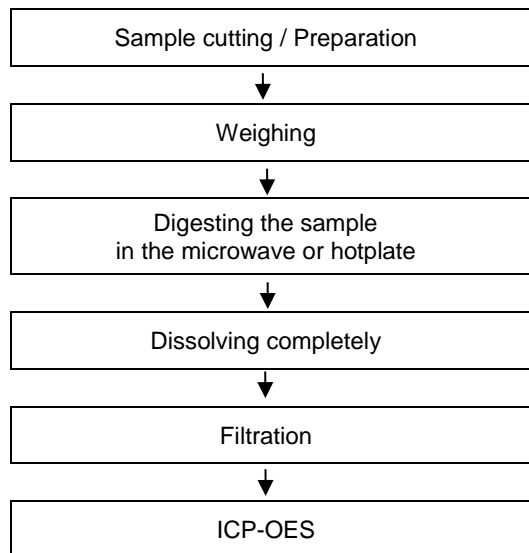
The tested sample is marked by an arrow if it's shown on the photograph.

■ Flow chart

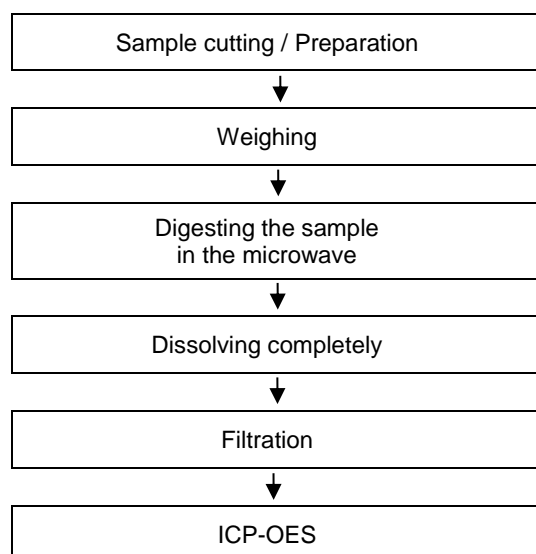
PBBs, PBDEs



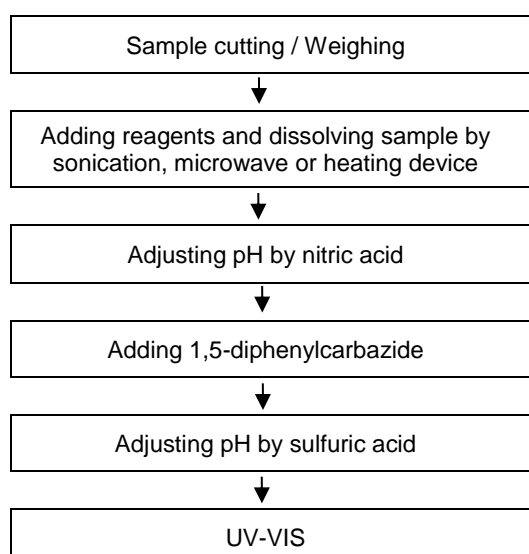
Cd, Pb



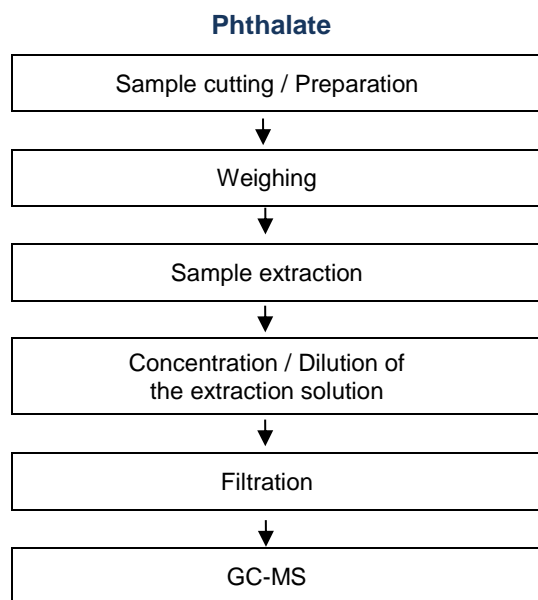
Hg



Cr⁶⁺



■ Flow chart



- E N D -