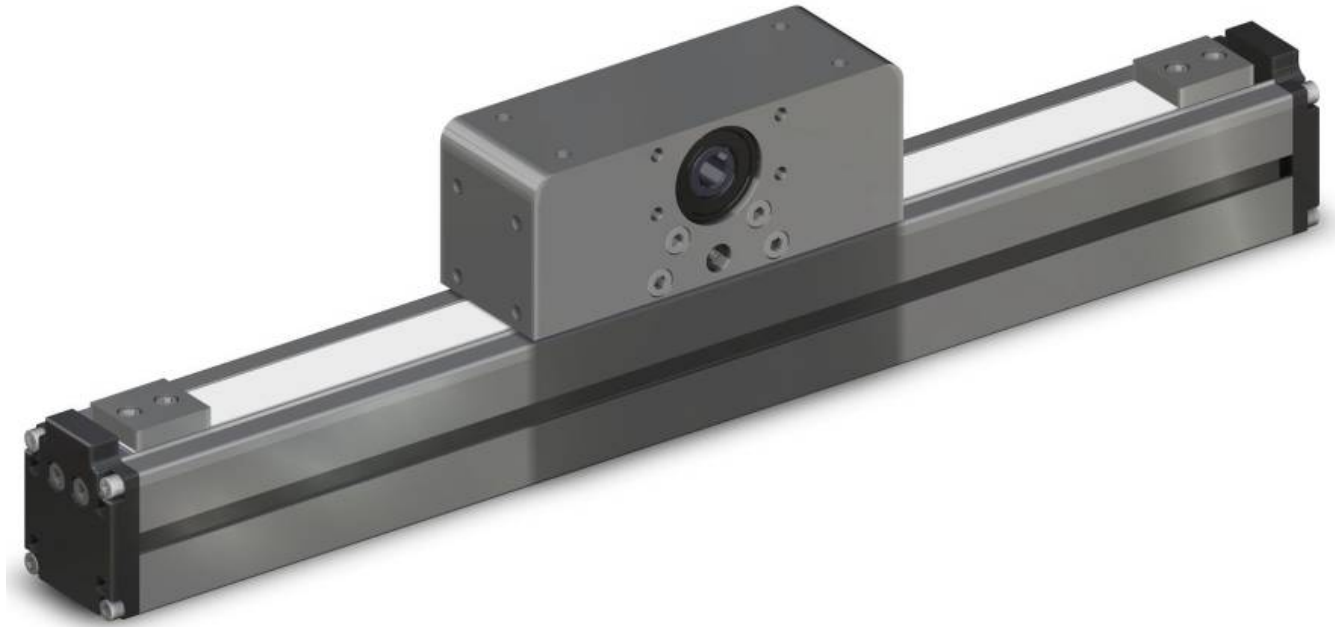
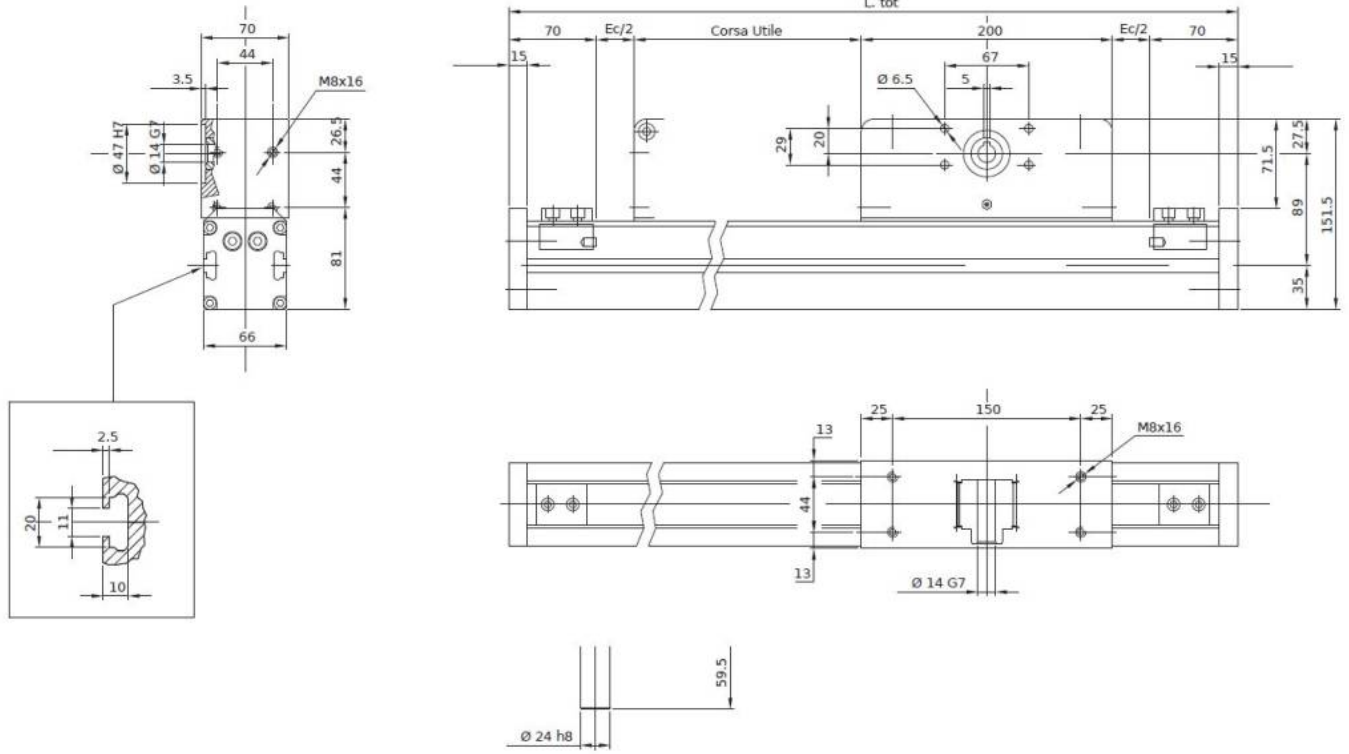


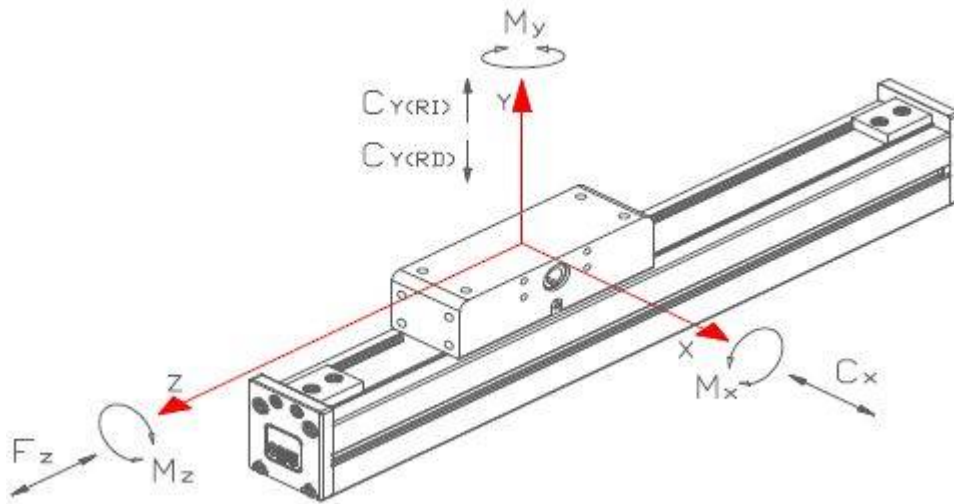
# ULCV 66



## Mechanical Drawing



## Load Rating



<b>Fz</b> [daN]	<b>Cx</b> [daN]	<b>Cy</b> [daN] (*)	<b>C<sub>ox</sub></b> [daN]	<b>C<sub>oy</sub></b> [daN] (*)	<b>M<sub>ox</sub></b> [daNm]	<b>M<sub>oy</sub></b> [daNm]	<b>M<sub>oz</sub></b> [daNm]
<b>110</b>	<b>1904</b>	<b>1904</b> ↓ <b>1904</b> ↑	<b>3091</b>	<b>3091</b> ↓ <b>3091</b> ↑	<b>253</b>	<b>253</b>	<b>20,2</b>

## Technical data

<b>Parameter</b>	<b>Symbol</b>	<b>Value</b>	<b>Unit</b>
Max usable stroke		6500	mm
Total lenght	Ltot	C+Lc+340	mm

Carriage length	Lc	200	mm
Carriage usable length	Lu	200	mm
Extra-stroke (safety)	Ec	60	mm
Max speed		250	m/min
Max acceleration		100	m/sec <sup>2</sup>
Position repeatability		< 0.05	mm
Aluminium profile section		66 x 70	mm
Inertia momentum of aluminium profile	I <sub>x</sub>	944288	mm <sup>4</sup>
Inertia momentum of aluminium profile	I <sub>y</sub>	993457	mm <sup>4</sup>
Type of mechanic		linear guide with compact block	
Belt type		Poliuretán HTD-5M-17	
Pulley teeth number		30	
Diameter		47,75	mm
Linear movement per rotation		180	mm
Operating temperature		-20 / +60	degrees

From:  
<https://www.nilab.at/dokuwiki/> - **NiLAB GmbH**  
**Knowledgebase**

Permanent link:  
<https://www.nilab.at/dokuwiki/doku.php?id=ulco:ulcv-66>

Last update: **2025/07/24 13:35**

