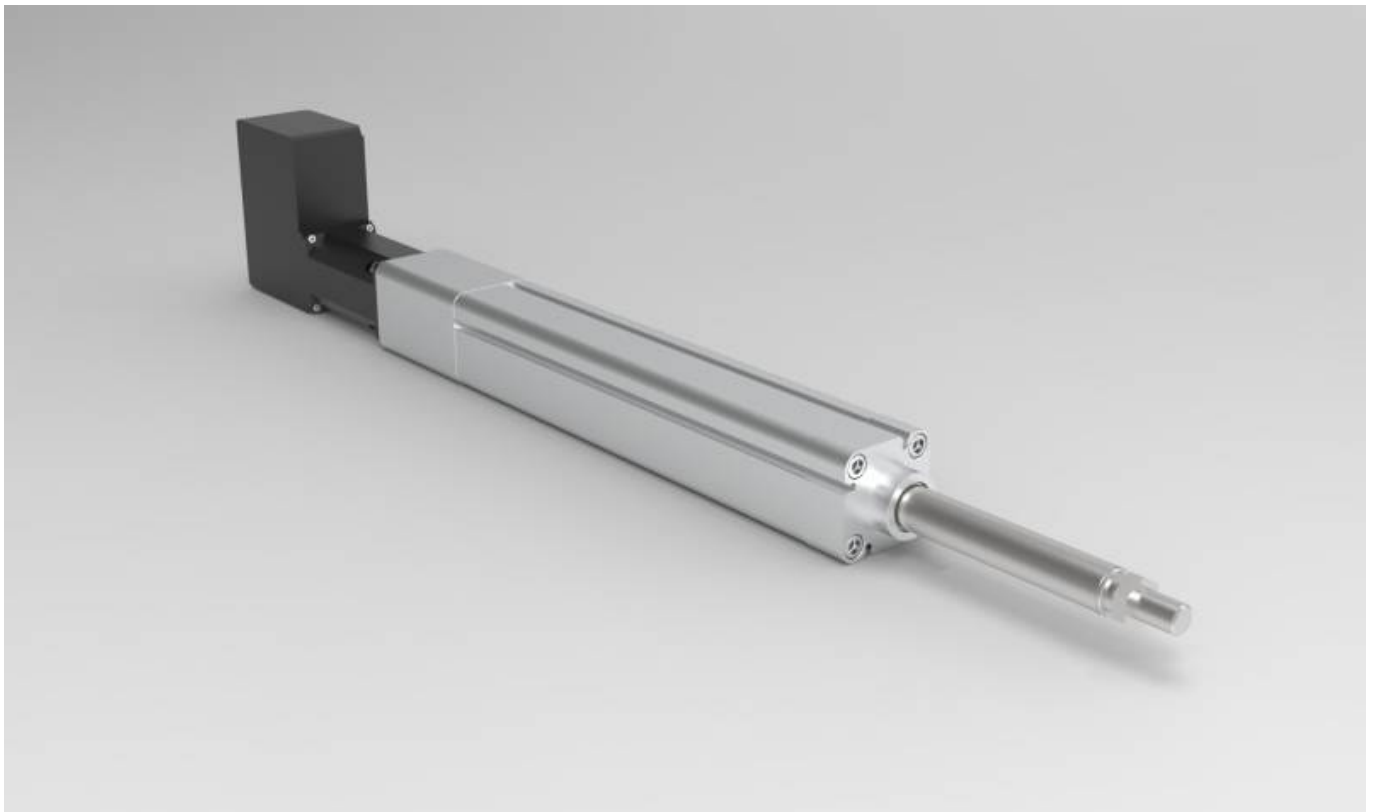


Mechanical construction



Standard: ISO 15552, Ball screw lead: 5, 10, 20 mm. The output screw is M16x1.5mm.

Ballscrew actuator sizes	50, 63
Standard	ISO15552
Repeatability (mm)	±0.02
Ball screw lead (mm)	5, 10, 20
Ball screw	50: C7ø16 63: C7ø20
Stroke (mm)	50: 100~600/50 pitch 63: 100~800/50 pitch
Antirotation accuracy	±0.4 degrees
Max speed (mm/s)	250~1000
Rated thrust (N)	390~3000

From:

<https://www.nilab.at/dokuwiki/> - NiLAB GmbH
Knowledgebase

Permanent link:

https://www.nilab.at/dokuwiki/doku.php?id=motolab_actuator:mechanics

Last update: 2026/01/08 15:51

