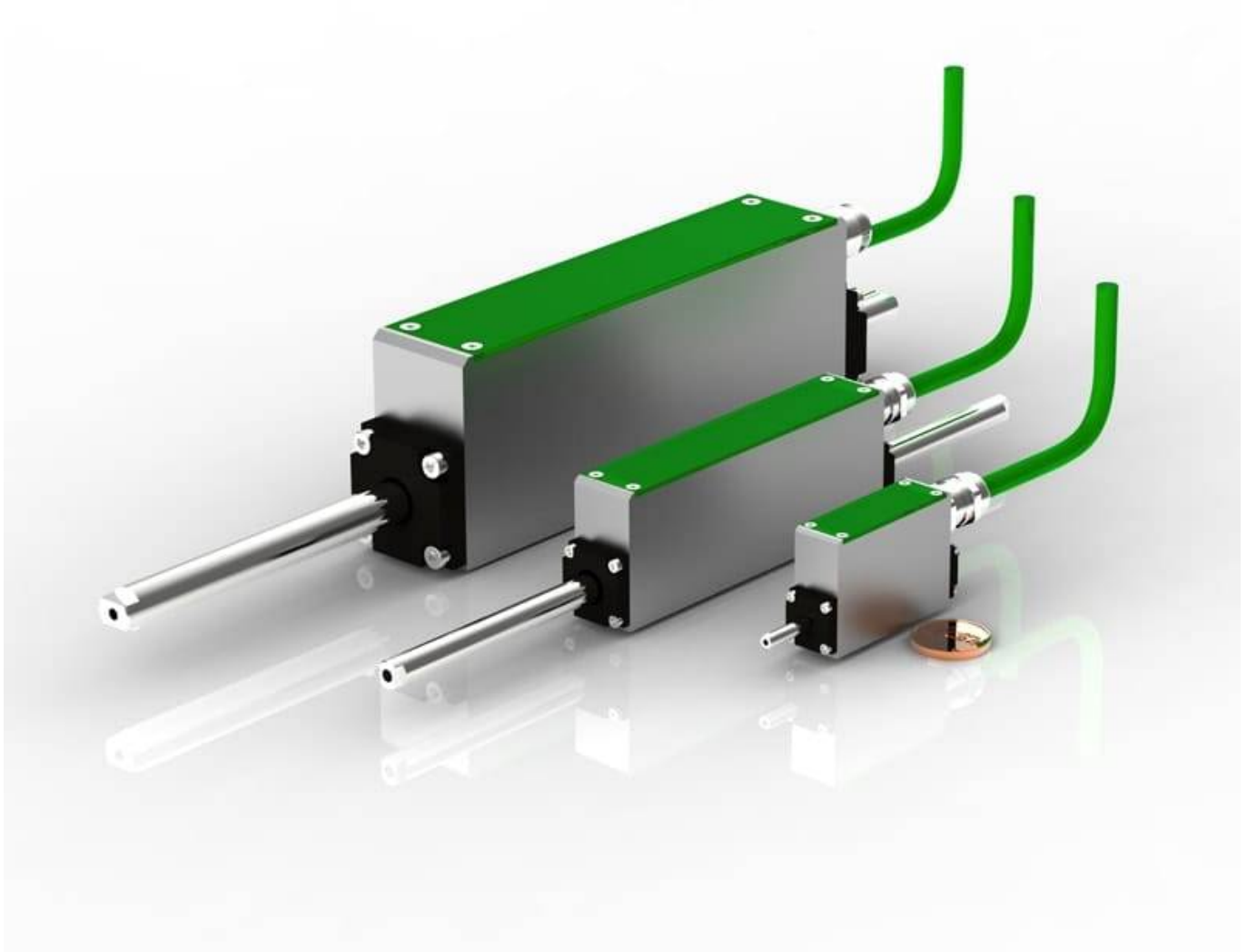


# NL miniature linear motors

Our **NL series miniature linear motors** are a complete solution for the pharmaceutical and medical industry and for all kind of automatic machines in general. One of the advantages of the standard NL series is its compactness with flange dimensions beginning from 15x34mm till 35x63mm. The linear motor is composed of a high performance three phase winding, an integrated encoder SIN/COS 1Vpp and a rod in AISI 304 stainless steel. The NL series, composed of 6 different types, has an excellent performance and dimension ratio. The force range starts from 0,6 N up to 20 N of continuous force with peak forces 6 times these values. The standard power supply of the drive is 24/48 VDC.



From:

<https://www.nilab.at/dokuwiki/> - NiLAB GmbH  
Knowledgebase

Permanent link:

[https://www.nilab.at/dokuwiki/doku.php?id=miniature\\_motors:start](https://www.nilab.at/dokuwiki/doku.php?id=miniature_motors:start)

Last update: **2024/03/04 09:25**



