

# LMA Linear actuator

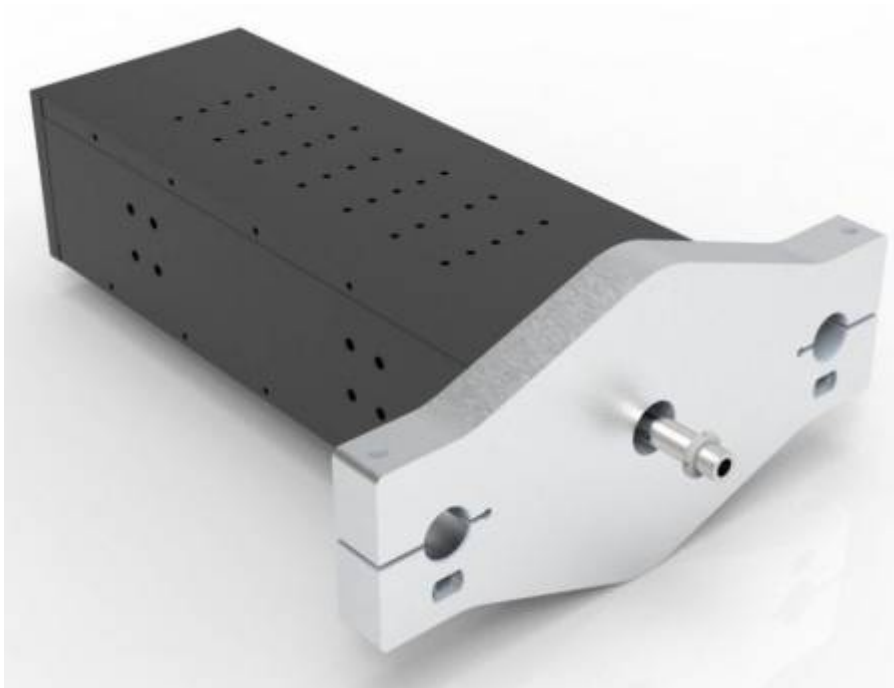
The LMA linear actuator is a complete linear unit composed by L series linear motors mounted as a sandwich arrangement.

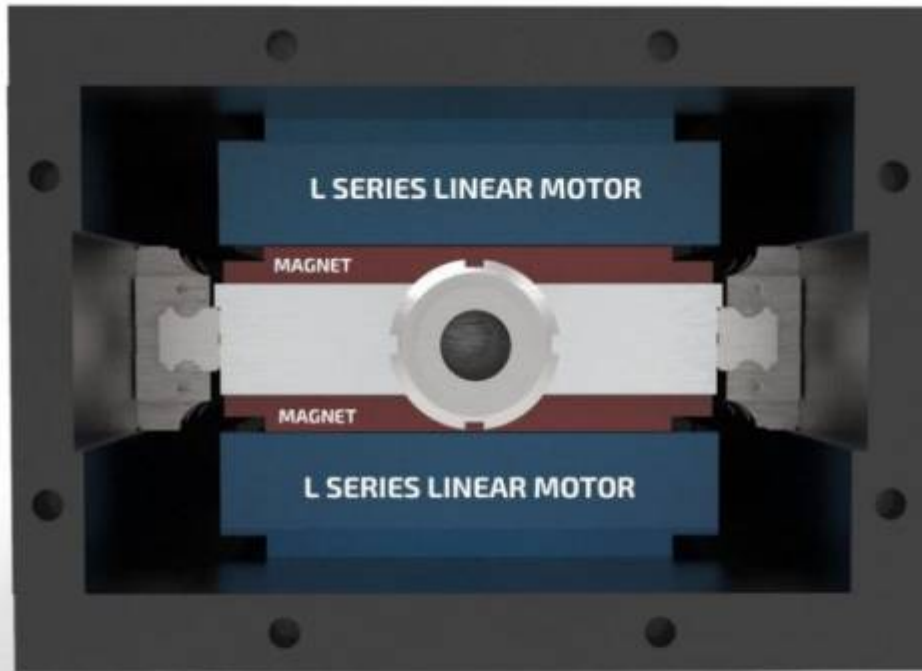
This arrangement guarantees the minimum magnetic preload on the linear guide and optimizes the force/stroke ratio.

The moving magnet part uses two magnet tracks guided with recirculating balls linear guide where the payload will be connected.

The LMA actuators can generate forces of 12000 N rated and 25200 N peak without water cooling or 19200 N rated force using water cooling.

The LMA actuators are available with integrated SIN/COS 1Vpp relative or absolute Hiperface magnetic encoder and they are suggested for realizing material testing machines: dynamic and static test.





From:

<https://www.nilab.at/dokuwiki/> - NiLAB GmbH  
**Knowledgebase**

Permanent link:

[https://www.nilab.at/dokuwiki/doku.php?id=lma\\_actuator:start](https://www.nilab.at/dokuwiki/doku.php?id=lma_actuator:start)

Last update: **2024/03/04 09:24**

