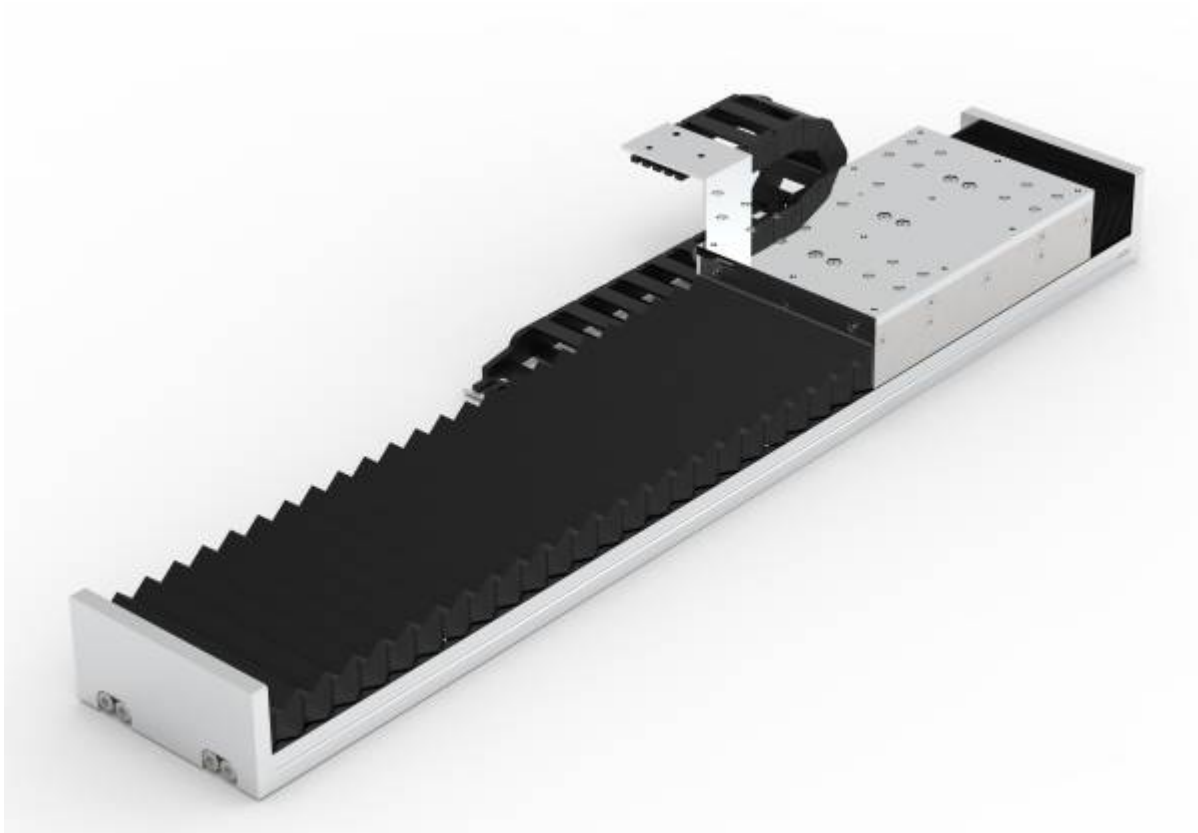
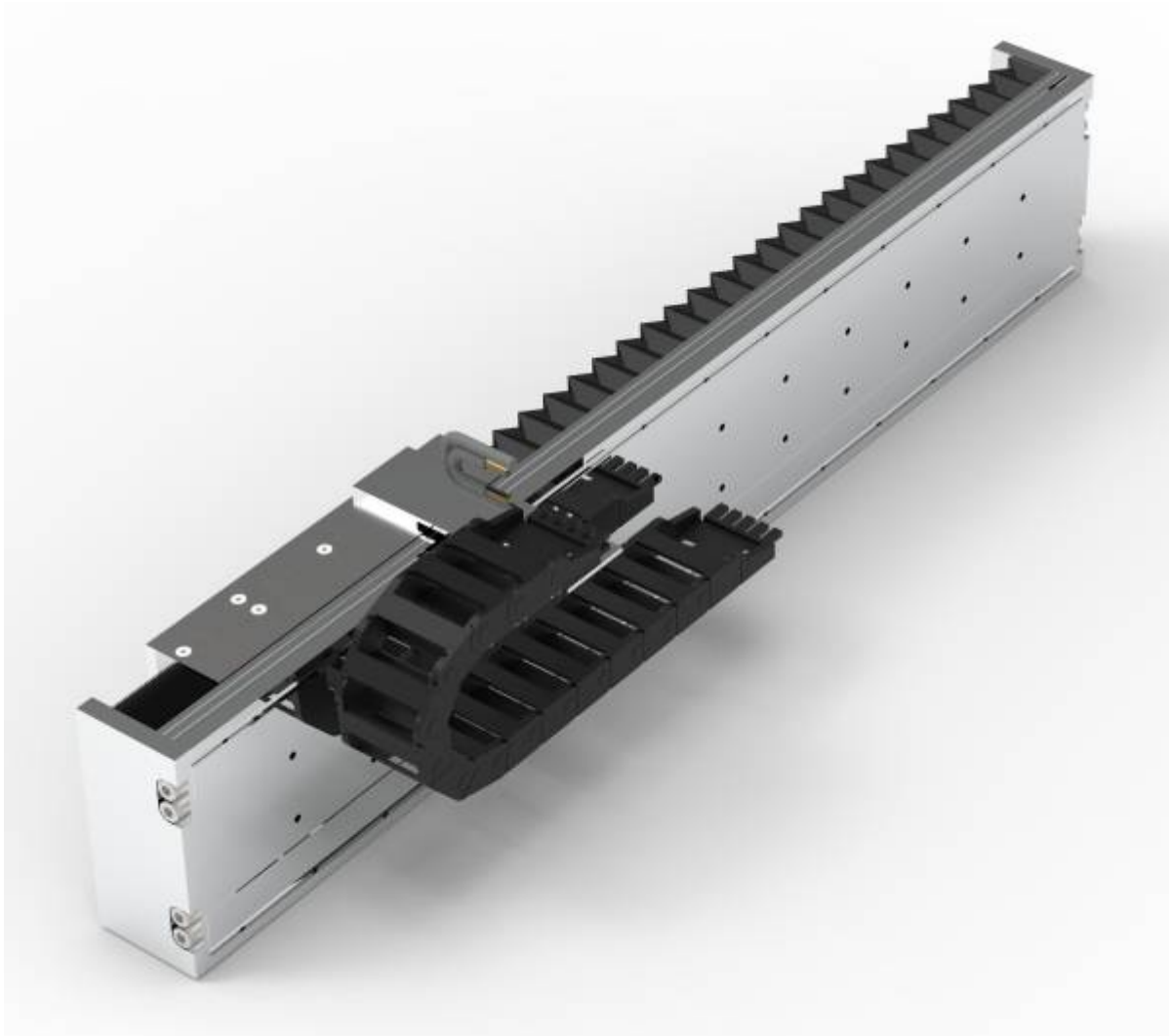


Cablechain option

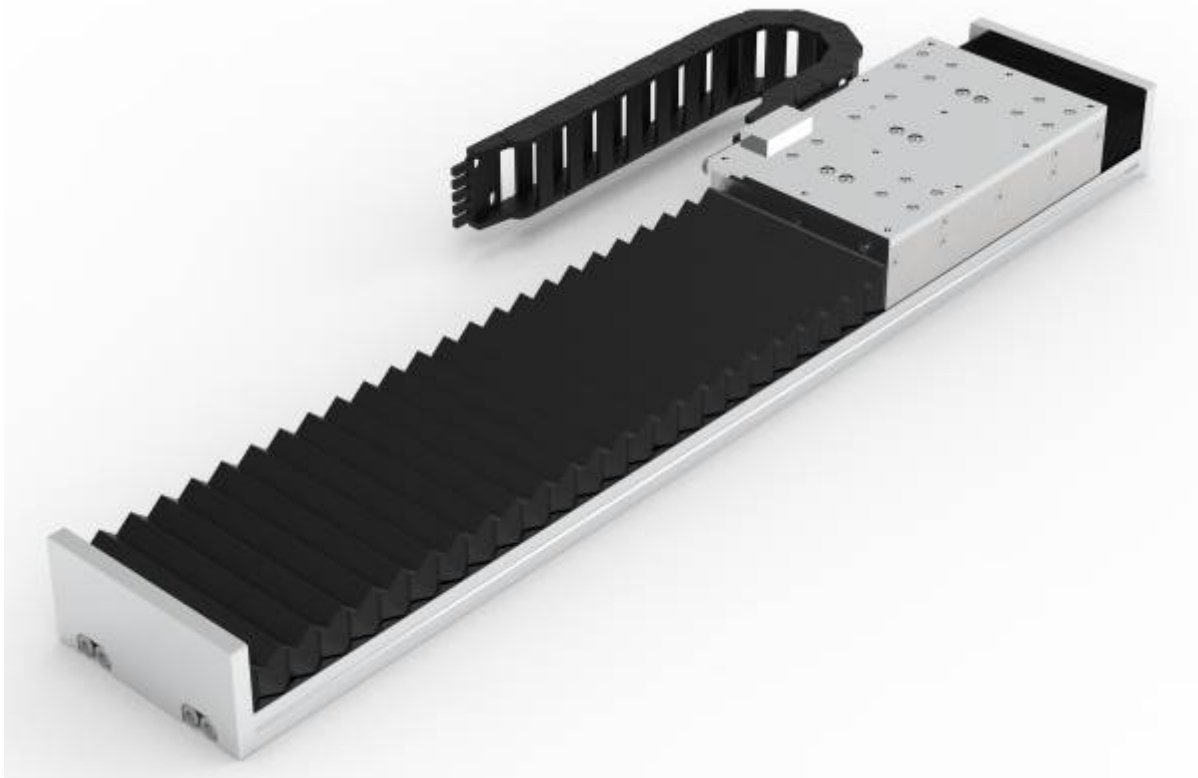
CH - Horizontal mounting



CV - Vertical mounting



CS - Side mounting



From:
<https://www.nilab.at/dokuwiki/> - **NI LAB GmbH**
Knowledgebase

Permanent link:
https://www.nilab.at/dokuwiki/doku.php?id=lm_linear_axes:cable_chain

Last update: **2023/09/25 14:12**

