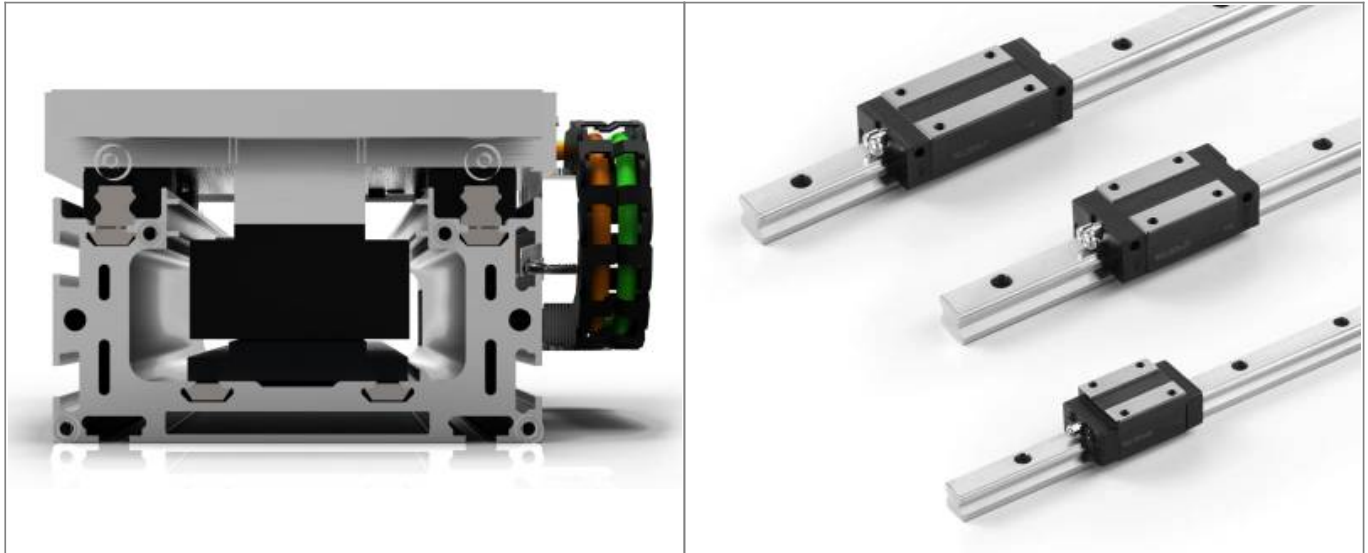


Linear guiding system

To design the linear system NiLAB can provide the correct linear guide type to meet the requirements of the Ironcore linear motors. In the standard mechanical configuration, the linear system is composed of two rails and at least 4 carriages connected to the axes.



Motor Size	Guide type	Number of carriage
L030P	Size 15	4
L050P	Size 20	4
L075P	Size 20 (long) or Size 25 (standard)	4 / 6
L100P	Size 30 (long)	4 / 6
L150P	Size 35 (long)	4 / 6
L200P	Size 45 (standard)	4 / 6
L250P	Size 45 (long)	4 / 6

From:
<https://www.nilab.at/dokuwiki/> - NiLAB GmbH
 Knowledgebase

Permanent link:
https://www.nilab.at/dokuwiki/doku.php?id=ironcore_motors:linear_guide

Last update: **2023/12/27 09:31**

