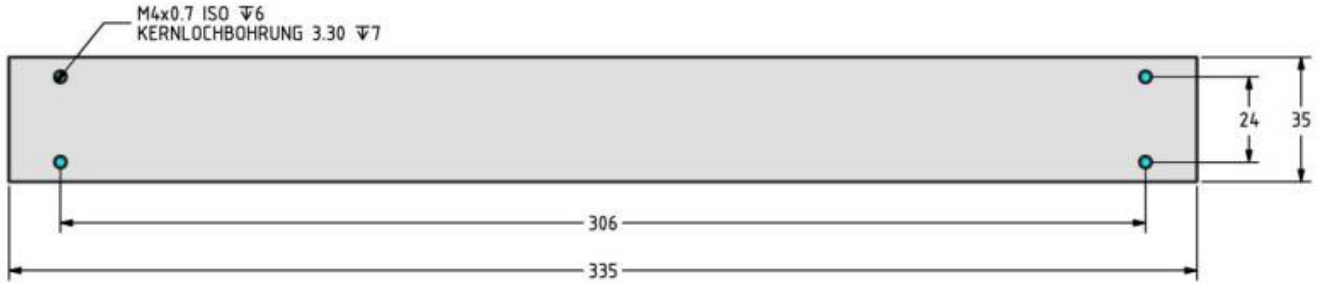
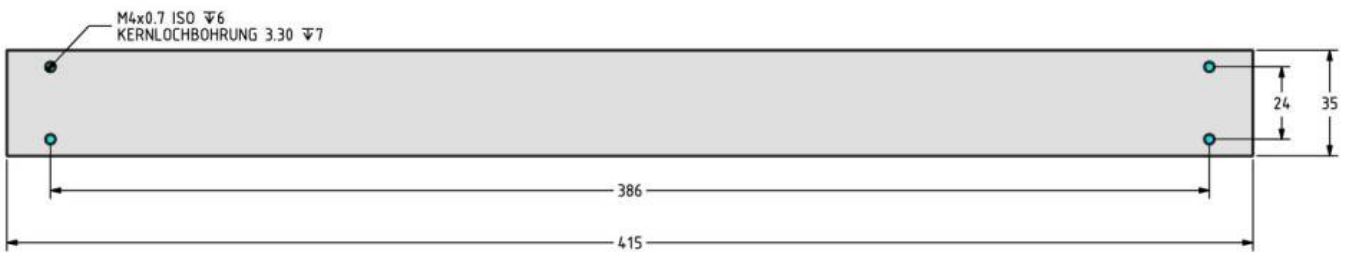


Installation

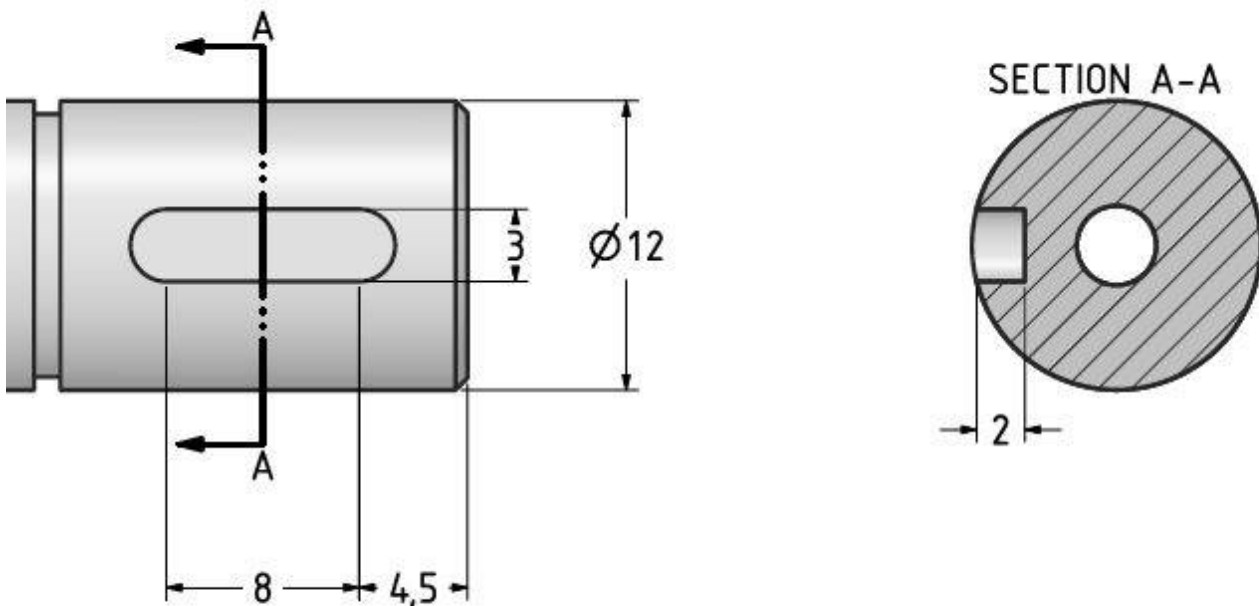
NLiR120Q-100-1 Fixing points



NLiR120Q-100-2 Fixing points



Load coupling on the rotary side



From:
<https://www.nilab.at/dokuwiki/> - **NiLAB GmbH**
Knowledgebase

Permanent link:
https://www.nilab.at/dokuwiki/doku.php?id=integrated_rotolinear:installation

Last update: **2024/09/23 08:20**

