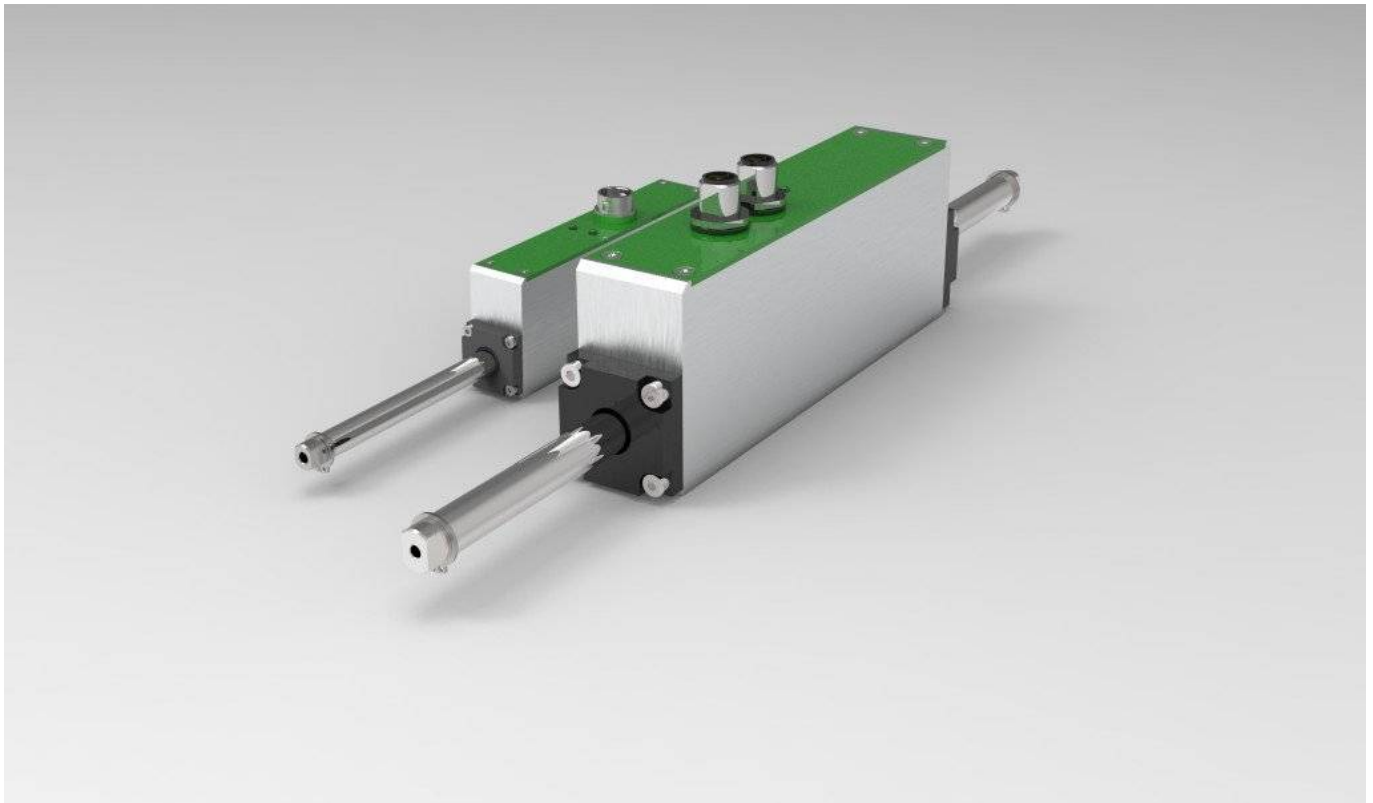


NLi integrated linear motors

The miniature linear motors with integrated drive have the same outside dimensions of the standard series.

The NLi series includes a low voltage servo-drive with a power-supply of 24/48 VDC and is programmable using a serial connection and a Modbus RTU protocol or CanOPEN fieldbus. The little PLC inside of the NLi motors is able to control the linear motion, using digital in- and outputs. The PLC uses a table of 10 programmable positions where the following motion parameters are specified: the motion profile type (trapezoidal, triangular, polynomial, sinusoidal), the motion time, the waiting time and the input type used as a trigger. All these parameters are programmable using the PC software NiLAB Starter.

The NLi linear motors are particularly indicated for the replacement of pneumatic actuators, using the same control of the electrovalve.



It is possible to request a version with double connectors (in and out) for *daisy chain* installation.

From:

<https://www.nilab.at/dokuwiki/> - **NiLAB GmbH**
Knowledgebase

Permanent link:

https://www.nilab.at/dokuwiki/doku.php?id=integrated_drive_motors:start

Last update: **2025/03/04 13:52**

