

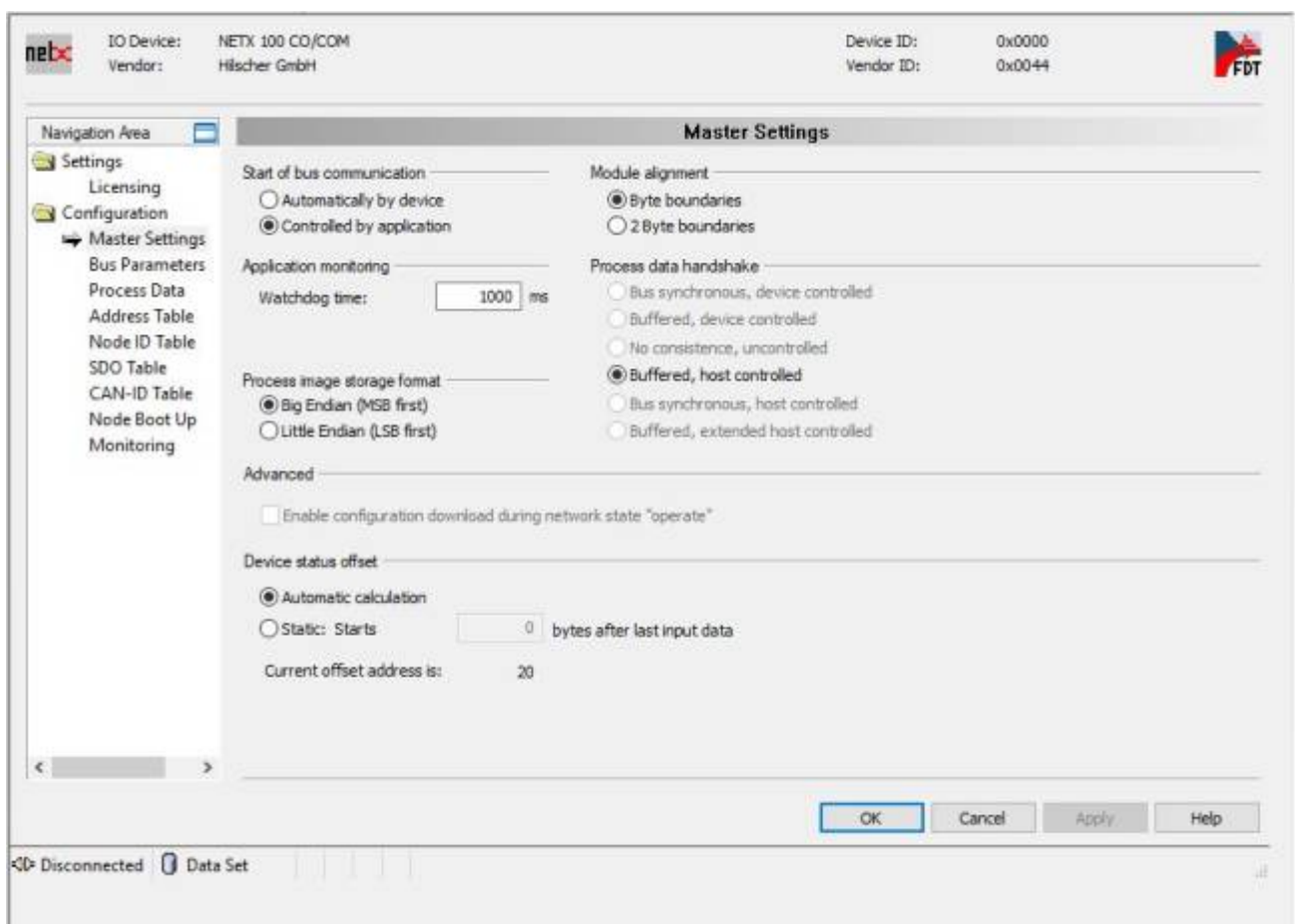
Ethernet/Powerlink Gateway



In order to control the integrated drive motor with Ethernet/Powerlink Master PLC, it is possible to use a standard Gateway solution.

The NLi motor must be updated with the Extended PDO Firmware. Please contact NiLAB for the right firmware.

Hilscher NETX 100 Ethernet/Powerlink to CanOPEN Gateway



The screenshot shows the 'Bus Parameters' configuration window. At the top, it displays 'IO Device: NETX 100 CO/COM' and 'Vendor: Hilscher GmbH'. On the right, it shows 'Device ID: 0x0000' and 'Vendor ID: 0x0044'. The 'Navigation Area' on the left lists various settings, with 'Bus Parameters' selected. The main area is titled 'Bus Parameters' and contains the following fields:

- Device description: X20IF1041_1a
- Node settings: Node ID: 1, Baud rate: 1 MBit/s
- SYNC Master Settings: COB-ID: 128, Cycle Period: 32 ms
- Stop in case of monitoring error:
- Send 'Global Start Node':
- 29 Bit COB-ID: Enable 29 bit COB-ID
- Acceptance mask: 00 00 00 00
- Acceptance code: 00 00 00 00

At the bottom right, there are buttons for 'OK', 'Cancel', 'Apply', and 'Help'. The status bar at the bottom left shows 'Disconnected' and 'Data Set'.

The screenshot shows the 'Address Table' configuration window. At the top, it displays 'IO Device: NETX 100 CO/COM' and 'Vendor: Hilscher GmbH'. On the right, it shows 'Device ID: 0x0000' and 'Vendor ID: 0x0044'. The 'Navigation Area' on the left lists various settings, with 'Address Table' selected. The main area is titled 'Address Table' and contains the following elements:

- Display mode: Hexadecimal
- CSV Export button
- Inputs table:

Node ID	Device	Name	Obj. Idx	Obj. Name	COB-ID	Type	Length	Address
0x02	NU (NU_integrated NU (NU_integrated_motor_ex	0x1800 TPDO communication param	0x1800	TPDO communication param	0x0182	IB	0x0008	0x0000
0x02	NU (NU_integrated NU (NU_integrated_motor_ex	0x1801 TPDO communication param	0x1801	TPDO communication param	0x0282	IB	0x0008	0x0008
0x02	NU (NU_integrated NU (NU_integrated_motor_ex	0x1802 TPDO communication param	0x1802	TPDO communication param	0x0382	IB	0x0004	0x0010

- Outputs table:

Node ID	Device	Name	Obj. Idx	Obj. Name	COB-ID	Type	Length	Address
0x02	NU (NU_integrated NU (NU_integrated_motor_ex	0x1400 RPDO communication param	0x1400	RPDO communication param	0x0202	GB	0x0008	0x0000
0x02	NU (NU_integrated NU (NU_integrated_motor_ex	0x1401 RPDO communication param	0x1401	RPDO communication param	0x0302	GB	0x0008	0x0008
0x02	NU (NU_integrated NU (NU_integrated_motor_ex	0x1402 RPDO communication param	0x1402	RPDO communication param	0x0402	GB	0x0004	0x0010

At the bottom right, there are buttons for 'OK', 'Cancel', 'Apply', and 'Help'. The status bar at the bottom left shows 'Disconnected' and 'Data Set'.

From:
<https://www.nilab.at/dokuwiki/> - **NiLAB GmbH**
Knowledgebase

Permanent link:
https://www.nilab.at/dokuwiki/doku.php?id=integrated_drive_motors:powerlink_gateway

Last update: **2026/02/24 15:45**

