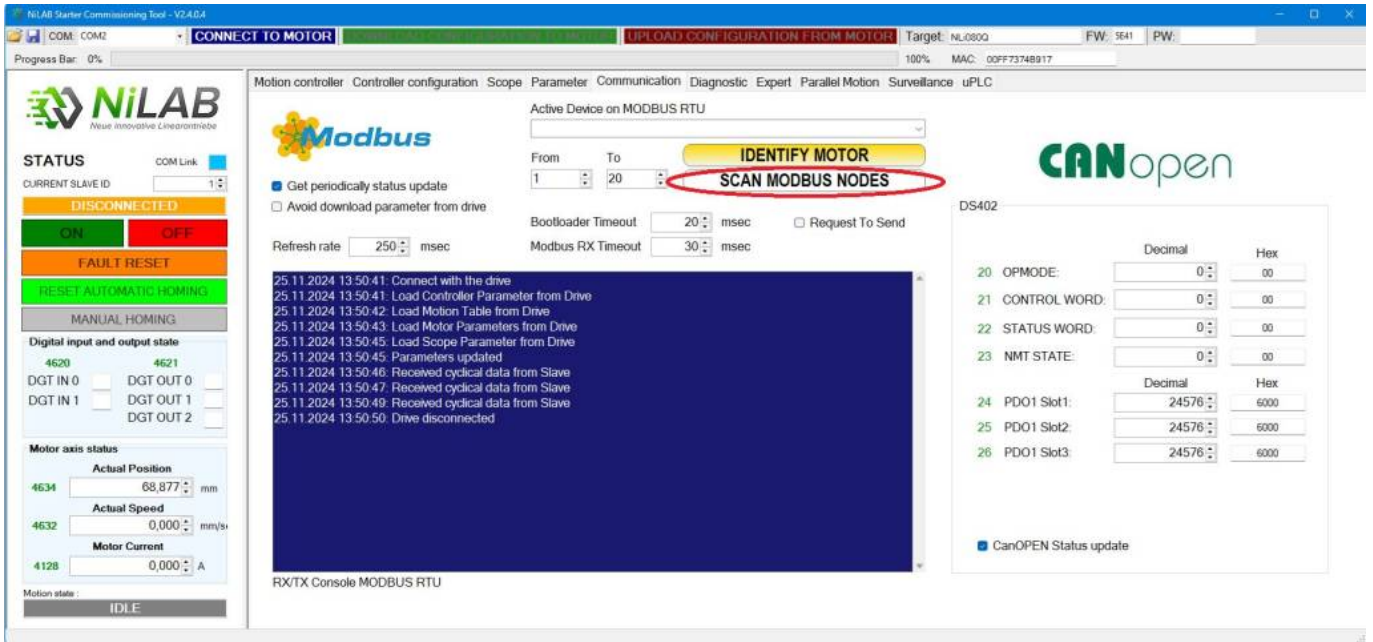
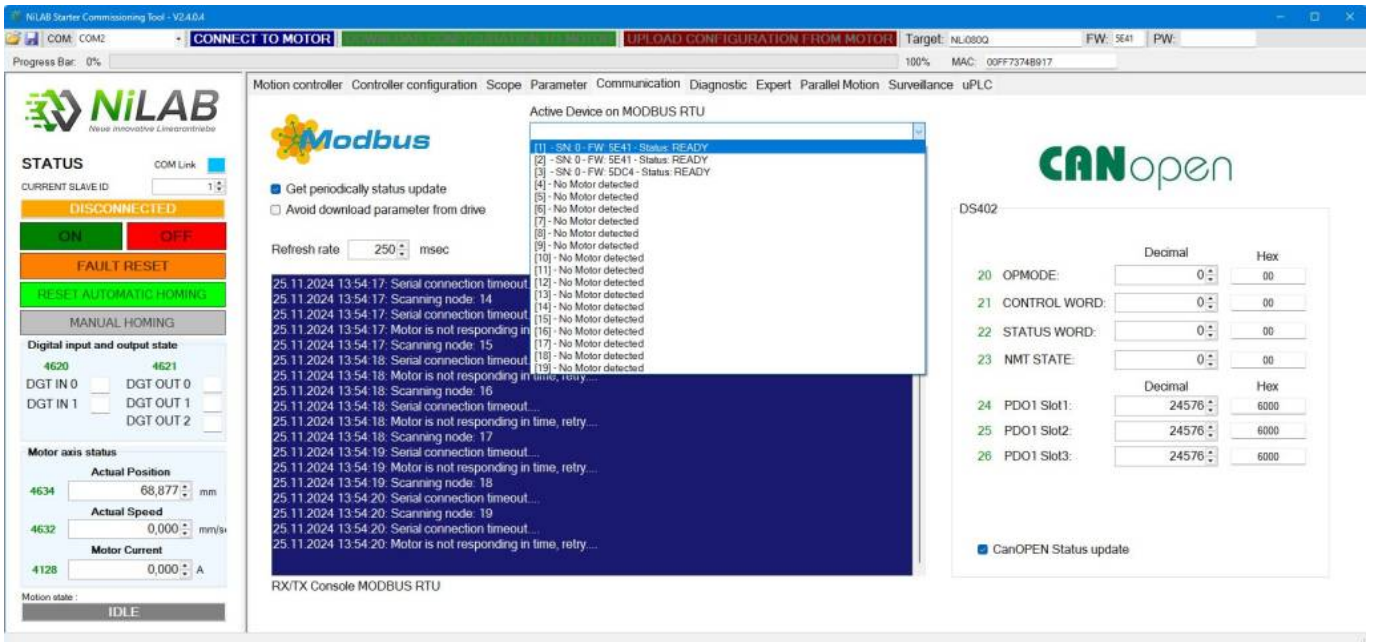


Motor identification on modbus

In order to identify the motor on the Modbus communication bus, please start the scan procedure press the button Scan Modbus nodes.



Please, select one of the motor in the active device list. For example n.1



Press No on the window to avoid the connection of the interface to the selected node id.

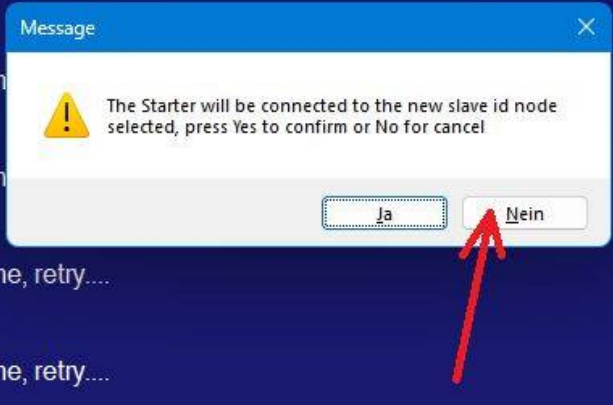
update 1 20 **SCAN MODBUS NODES**

meter from drive Bootloader Timeout 20 msec Request To Send

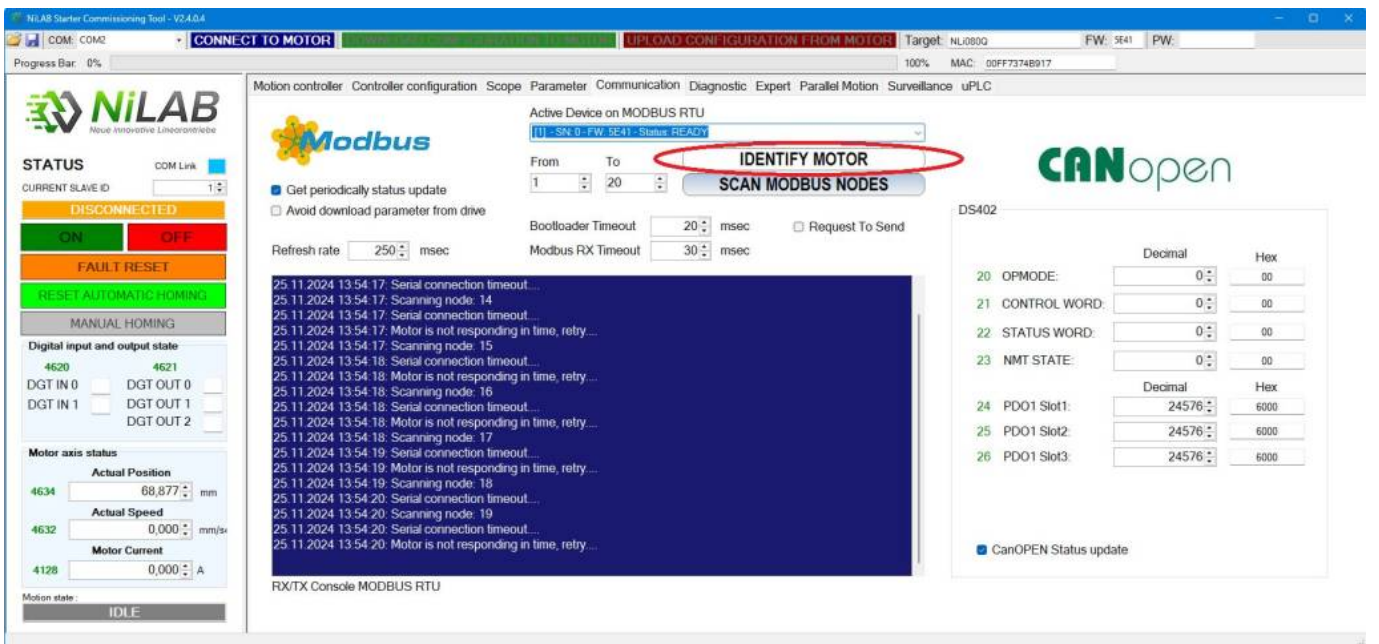
msec Modbus RX Timeout 30 msec

DS402

- 20 OPMOD
- 21 CONTR
- 22 STATUS
- 23 NMT ST
- 24 PDO1 S
- 25 PDO1 S
- 26 PDO1 S



Please press the button IDENTIFY MOTOR to start the identification process.



Active Device on MODBUS RTU: (1) - SN: 0 - FW: 5E41 - Status: READY

From: 1 To: 20

Refresh rate: 250 msec

Bootloader Timeout: 20 msec Request To Send

Modbus RX Timeout: 30 msec

DS402

	Decimal	Hex
20 OPMODE:	0	00
21 CONTROL WORD:	0	00
22 STATUS WORD:	0	00
23 NMT STATE:	0	00
Decimal Hex		
24 PDO1 Slot1:	24576	6000
25 PDO1 Slot2:	24576	6000
26 PDO1 Slot3:	24576	6000

CanOPEN Status update

The red and green LED on the motor, indicating its identification, blinked alternately for 3 seconds. This happened at every identification request.

From: <https://www.nilab.at/dokuwiki/> - **NI-LAB GmbH Knowledgebase**

Permanent link: https://www.nilab.at/dokuwiki/doku.php?id=integrated_drive_motors:identification

Last update: 2024/11/25 19:43

