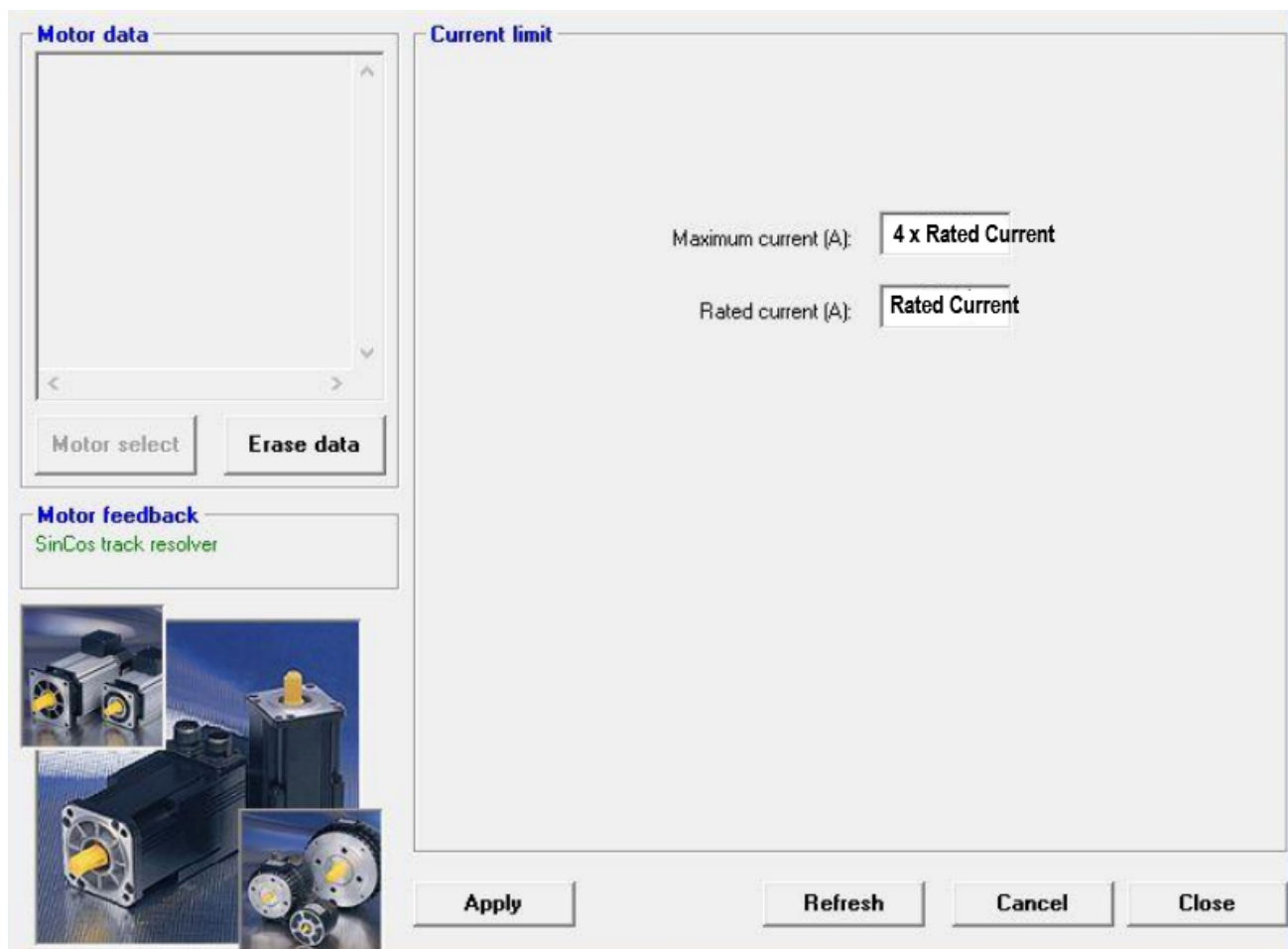


Xtrapulspack Servo drive TTL Incremental Encoder

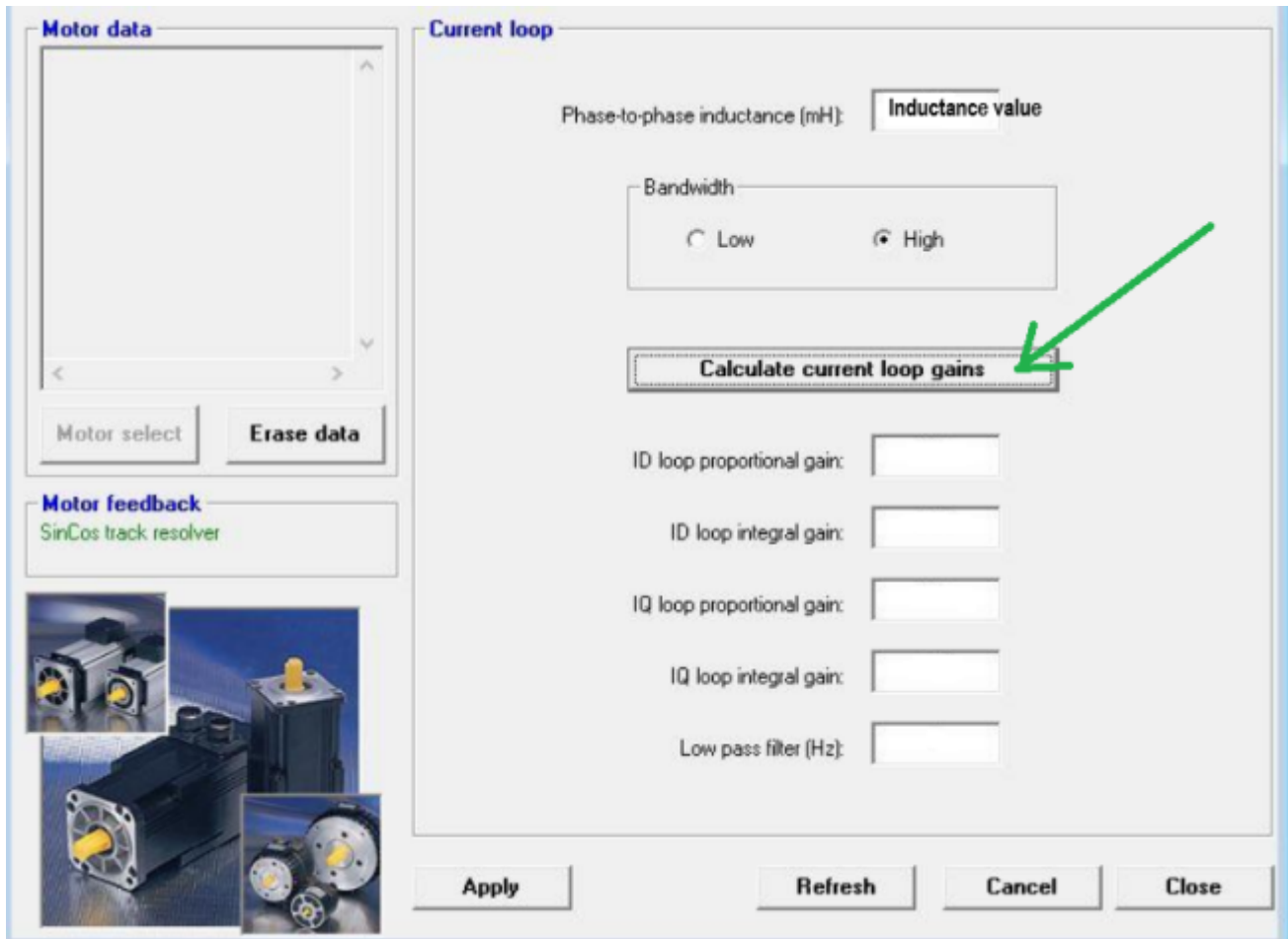
for the configuration of the Xtrapulspack Gem Drive Studio software is used.

Please use our [Datasheet engine](#) to see the motor parameters.

Step 1) ⇒ Motor config ⇒ Current limit

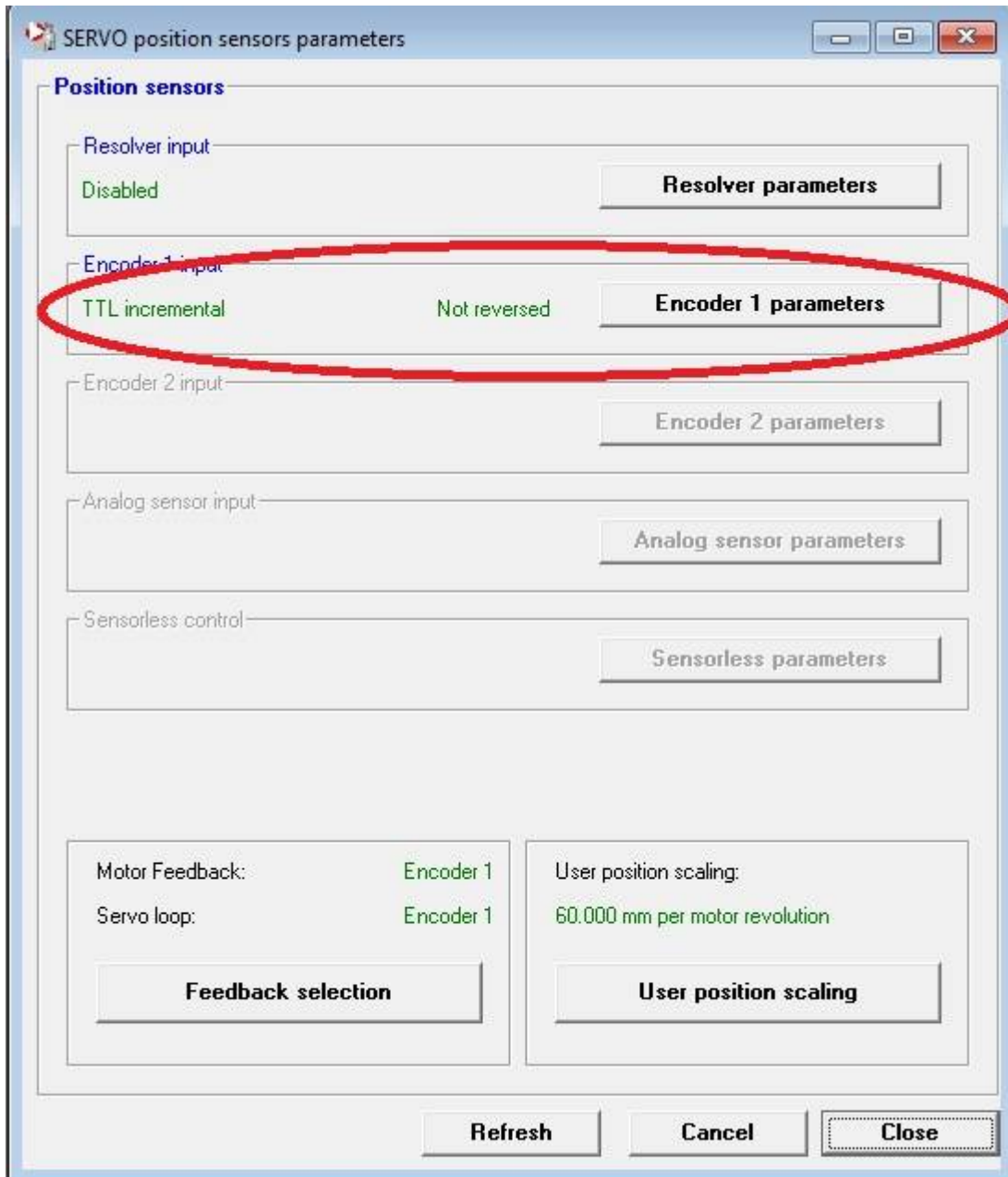


Step 2) => Motor config => Current Loop

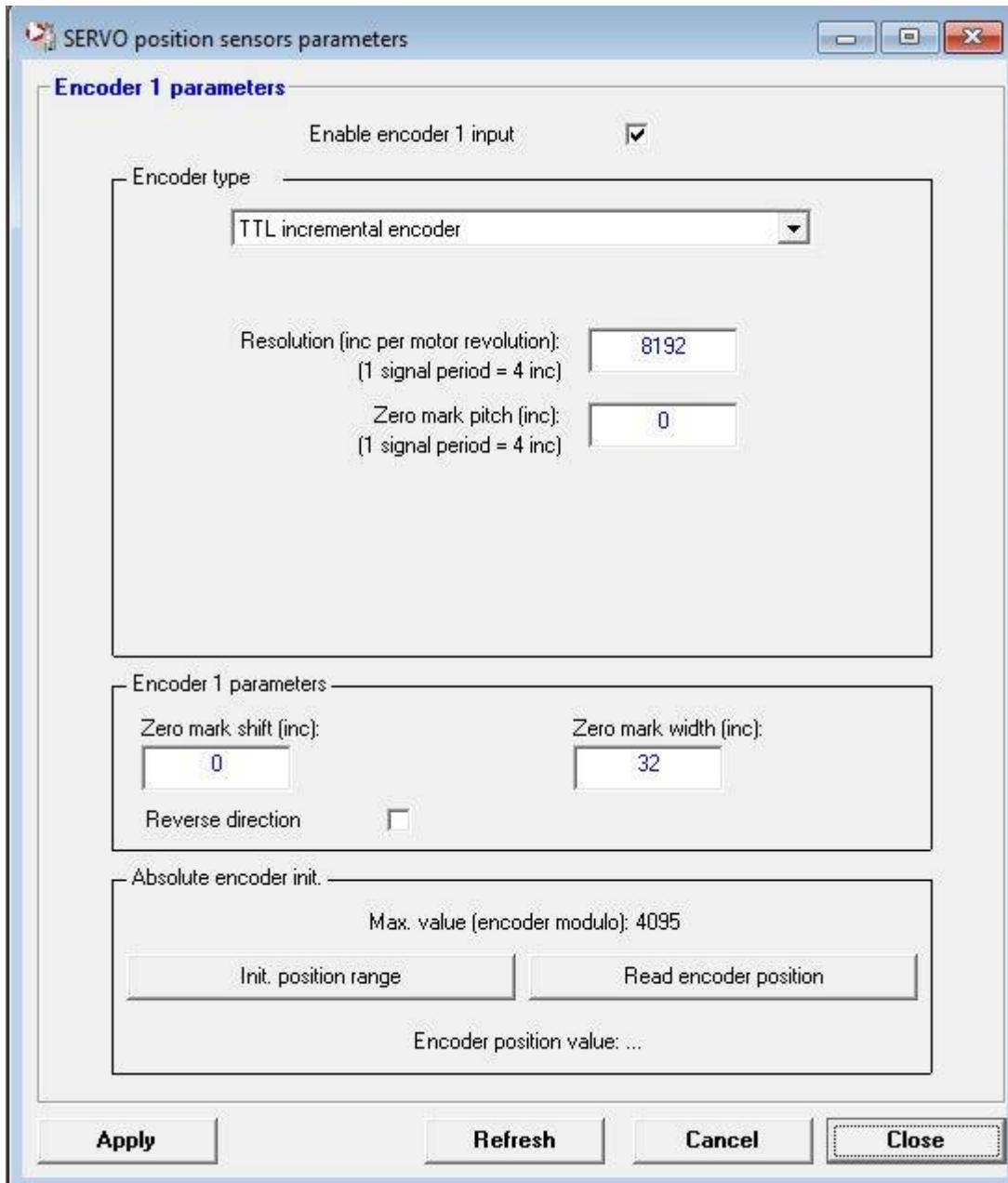


Step 3) Position sensors

In order to use the digital output incremental encoder as motor feedback please disable Resolver input and select TTL incremental.



As a default use the resolution of 8192 pulses/cycle. If the motor as different resolution please use the right one here.



Step 4) Position sensors ⇒ User position scaling

User position scaling

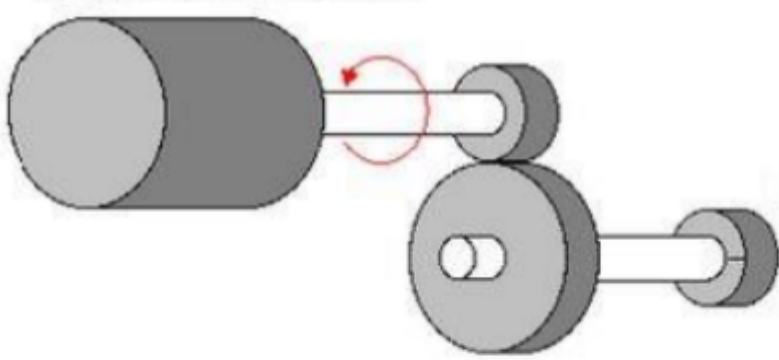
Position unit

- Revolution
- Increment
- Millimeter
- Meter
- Degree
- Other unit:

Display factor

- 1
- 0.1
- 0.01
- 0.001

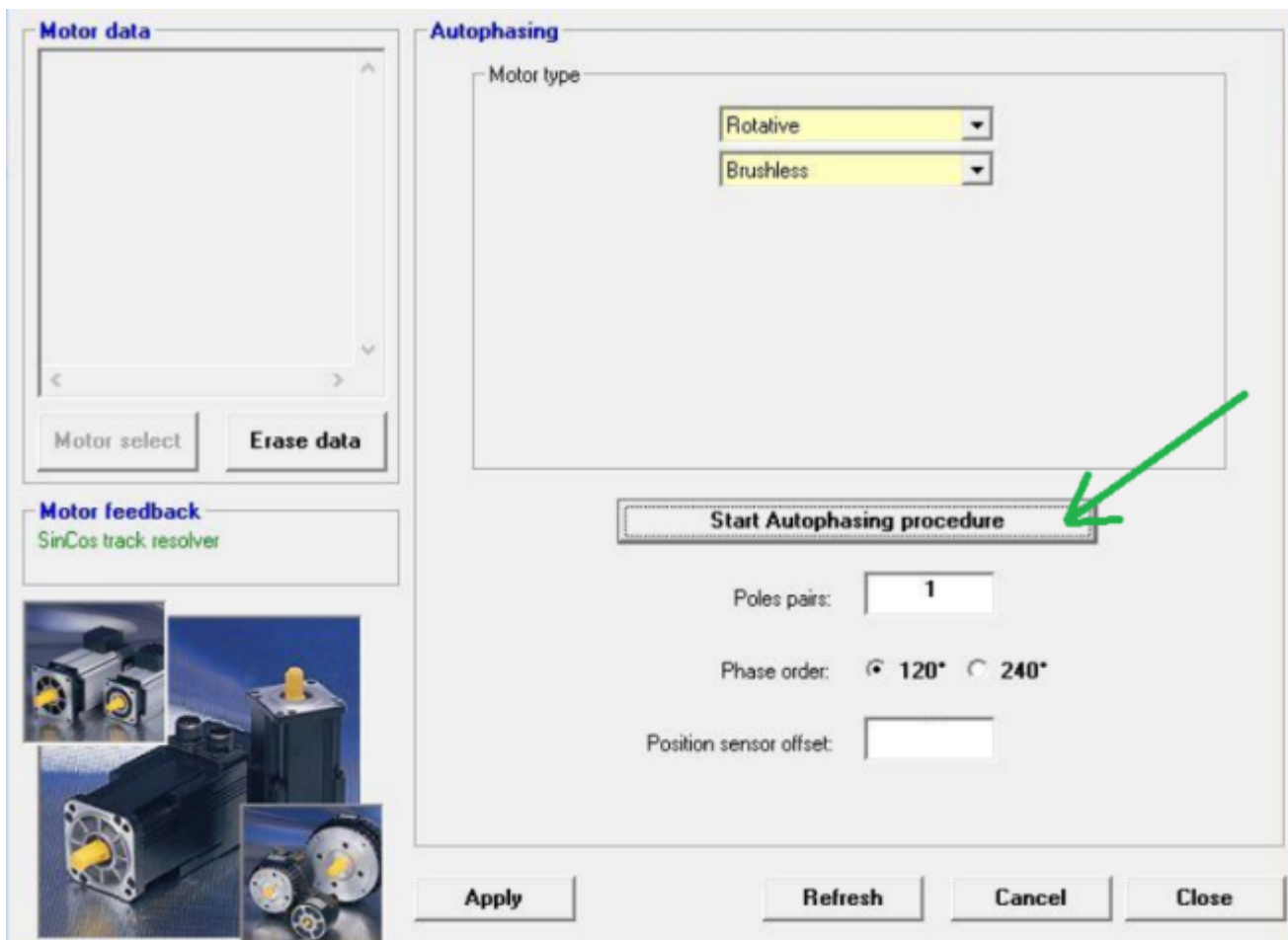
Motor displacement: 1 revolution



Load displacement in mm:

Apply Refresh Cancel Close

Step 5) Motor config ⇒ Autophasing



Step 6) Specify the motion profile requirements

Use Profile modes to specified using **Position profile mode** the speed and acceleration requirements for your application.

Step 7) Perform an Autotune

Use Controller ⇒ Autotuning to tune the motor following the position profile mode specifications.

From:
<https://www.nilab.at/dokuwiki/> - NiLAB GmbH
Knowledgebase

Permanent link:
https://www.nilab.at/dokuwiki/doku.php?id=green_drive_motors:xtrapulspack_incremental

Last update: 2025/05/16 06:05

