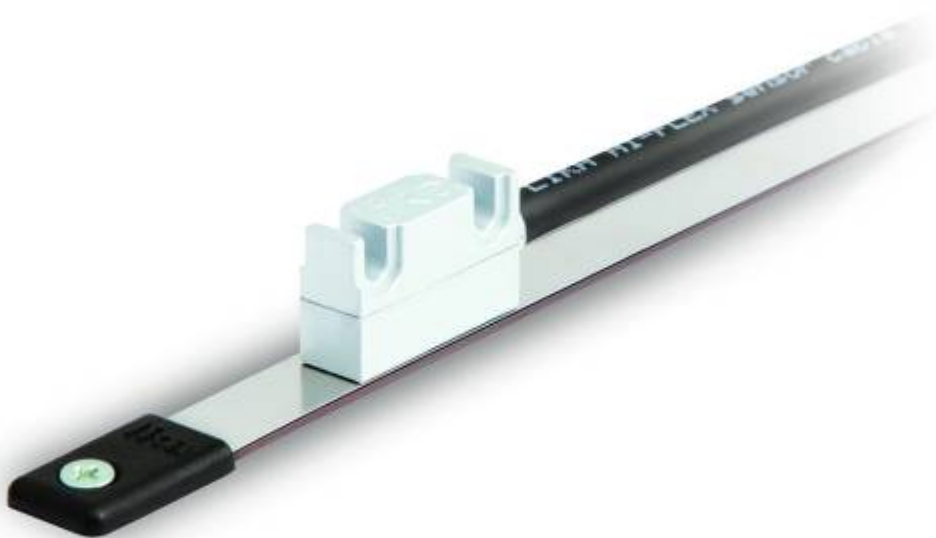


Encoder type

GDM linear unit can be equipped with different types of linear encoders: Incremental, Digital and Absolute Hiperface

Incremental magnetic SIN/COS 1Vpp (Default)



Performance

Parameter	Value
Repeatability	+/- 1 increment (with 12 Bit \Rightarrow +/-1 microns)
Accuracy	max 1% of period length (with MT10 \Rightarrow +/- 10 microns)
Power consumption	25mA typ, 50mA max

Pinout

Function	Cable wire colors
0 VDC	Black

+5VDC +/-5%	Red
SIN+	Yellow
SIN-	Blue
COS+	Green
COS-	Orange
Shielding	Shield

From:

<https://www.nilab.at/dokuwiki/> - **NiLAB GmbH**
Knowledgebase

Permanent link:

https://www.nilab.at/dokuwiki/doku.php?id=gdm_linear_axes:encoder

Last update: **2023/09/28 09:30**

