

Epulse 30/50/100 DC Servo drive

Overview

NI LAB's **EPULSE30/50/100** servo drives are **low voltage servo drives for battery powered applications**.

The servodrive **EPULSE30** is able to provide a current up to 50 A with a battery range from 12 to 48VDC.

The servodrive **EPULSE50** is able to provide a current up to 120 A with a battery range from 24 to 72V

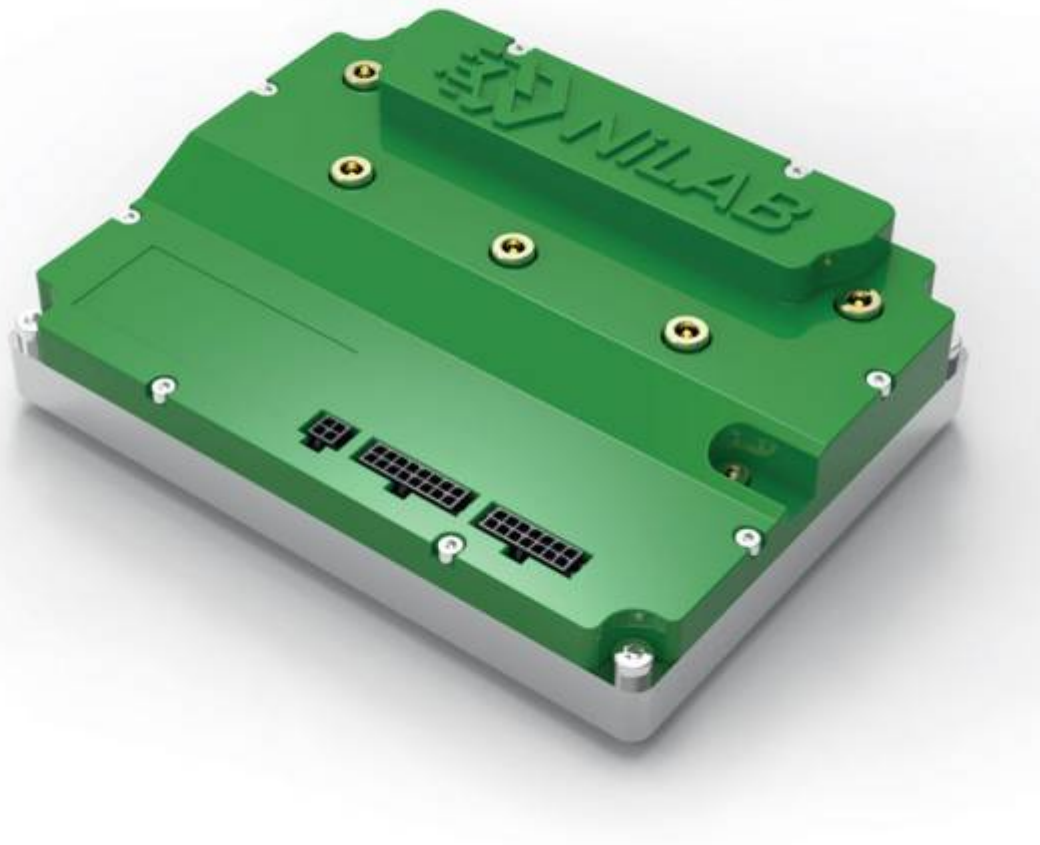
The servodrive **EPULSE100** is able to provide a current up to 200 A with a battery range from 24 to 72V

Thanks to their **compact design** these two types of servodrives can be integrated also in **smallest spaces** without performance loss. With these drives you receive the best price-performance-ratio. They are particularly indicated to be used in **battery powered vehicles**.

EPULSE 30/50



EPULSE100



Characteristics

Intelligent and flexible control of the motors thanks to their compatibility with different types of encoder feedback: hallsensor, SIN/COS, resolver, variable reluctance resolver (on request), ABZ + Hall
Different control options: analogic, CANopen
Compact sizes for applications with vibrations and shocks
Regenerative hardware / software ready
PWN frequency 10 kHz
2 programmable digital inputs and outputs
1 CAN interface
1 serial interface for programming and diagnostic
EPULSE50: Accelerometer option
Board version only without cover available

Advantages

Flexible and efficient software algorithm
Customizable firmware
Control for standard brushless motors and for motors with many polpairs
Datalogging
CANopen fieldbus

Accelerometer, goniometer and tiltmeter compatible

From:

<https://www.nilab.at/dokuwiki/> - **NiLAB GmbH**
Knowledgebase

Permanent link:

https://www.nilab.at/dokuwiki/doku.php?id=epulse50_dc_servodrive:start

Last update: **2024/07/30 13:15**

