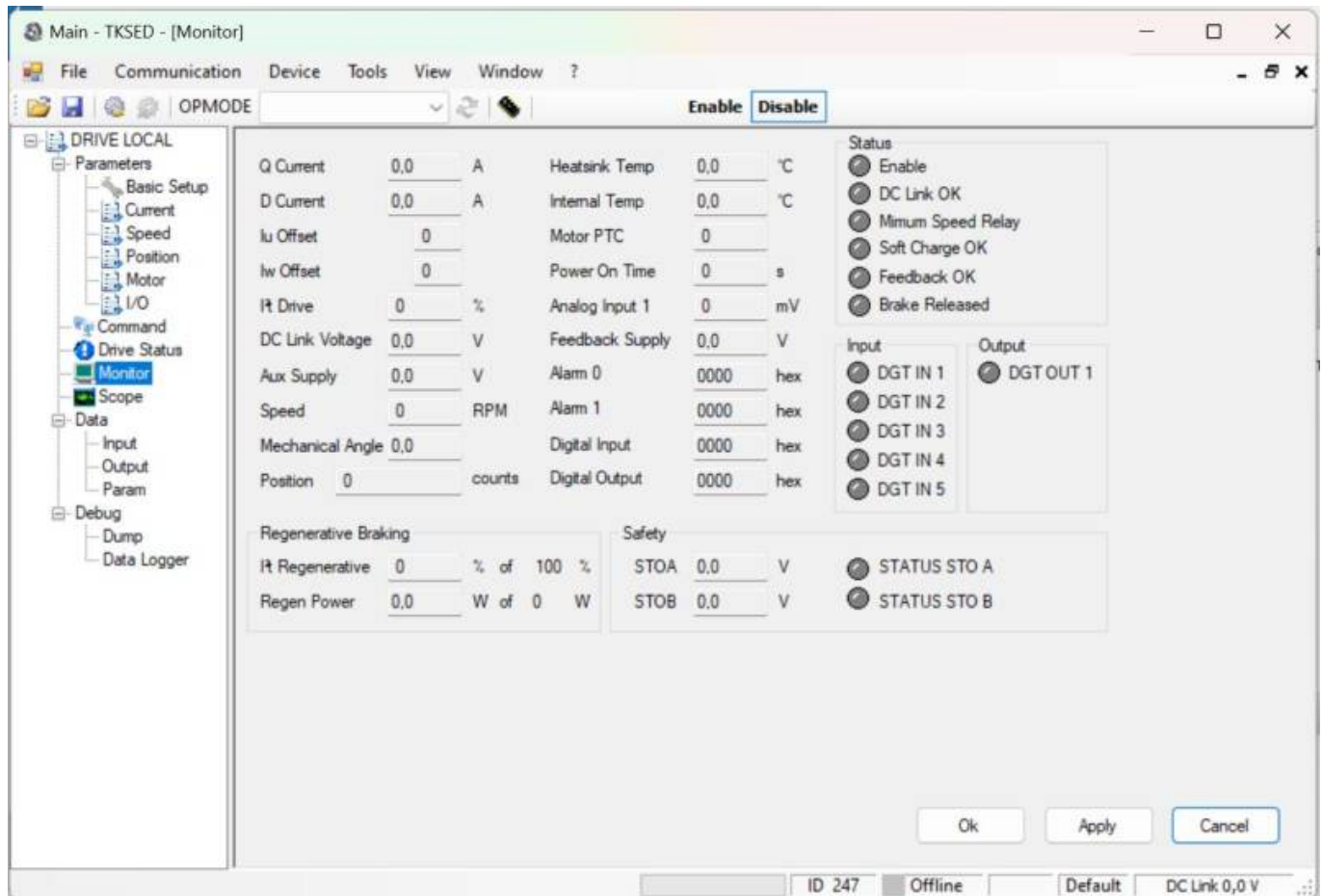


Two kind of software interface are available for programming EPULSE servo drive: ByInterface for general configuration and commitioning and Motolab starter for commitioning of applications

NiLAB ByInterface - Software for parametrization

Download link:

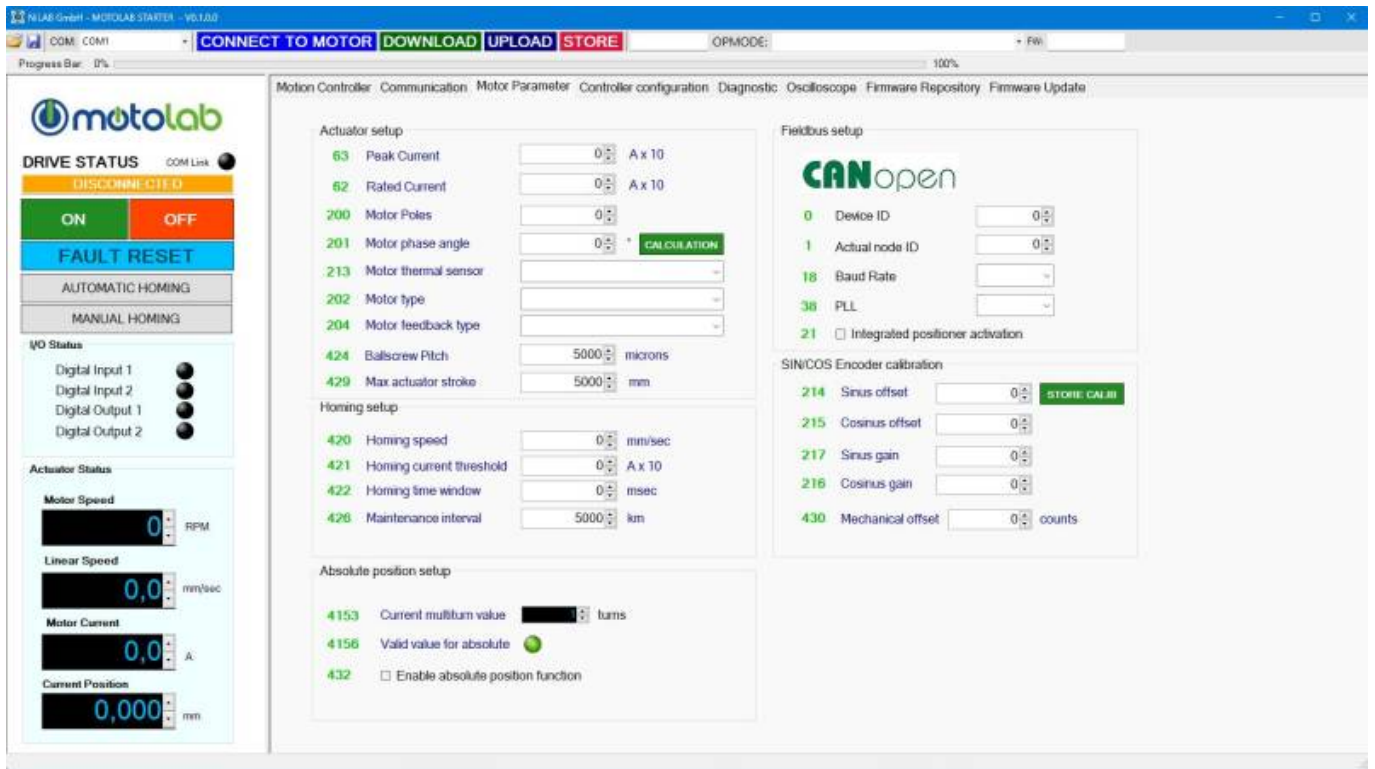
<https://www.nilab.at/download/nilab-byinterface-10-4-0-epulse-and-mbd-drive/?wpdmdl=6966&refres h=654c8643e112a1699513923>



MotoLAB Starter - Software for application configuration

Download link:

https://www.nilab.at/download/motolab_starter_ver0-0-1-0/?wpdmdl=6631&refresh=654c8643db4f81699513923



From:
<https://www.nilab.at/dokuwiki/> - NiLAB GmbH
Knowledgebase

Permanent link:
https://www.nilab.at/dokuwiki/doku.php?id=epulse50_dc_servodrive:pc_software

Last update: 2023/11/13 11:00

